

## Product datasheet for TA344820

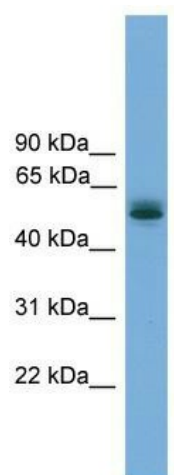
### CCDC76 (TRMT13) Rabbit Polyclonal Antibody

#### Product data:

Product Type:	Primary Antibodies
Applications:	WB
Recommended Dilution:	WB
Reactivity:	Human
Host:	Rabbit
Isotype:	IgG
Clonality:	Polyclonal
Immunogen:	The immunogen for anti-CCDC76 antibody: synthetic peptide directed towards the N terminal of human CCDC76. Synthetic peptide located within the following region: QLAKHLKKCNSREKPKPDFYIQDINAGLRDETEIPEQLVPISSLSEEQLE
Formulation:	Liquid. Purified antibody supplied in 1x PBS buffer with 0.09% (w/v) sodium azide and 2% sucrose.
Purification:	Affinity Purified
Conjugation:	Unconjugated
Storage:	Store at -20°C as received.
Stability:	Stable for 12 months from date of receipt.
Predicted Protein Size:	54 kDa
Gene Name:	tRNA methyltransferase 13 homolog
Database Link:	<a href="#">NP_061956</a> <a href="#">Entrez Gene 54482 Human</a> <a href="#">Q9NUP7</a>
Background:	CCDC76 specifically methylates guanosine-4 in various tRNAs with a Gly(CCG), His or Pro signature.
Synonyms:	CCDC76
Note:	Immunogen Sequence Homology: Human: 100%; Pig: 92%; Rat: 92%; Horse: 92%; Mouse: 92%; Bovine: 92%; Guinea pig: 92%; Rabbit: 85%


[View online »](#)

## Product images:



WB Suggested Anti-CCDC76 Antibody Titration:  
0.2-1 ug/ml; Positive Control: Human Lung