

## Product datasheet for **TA344818**

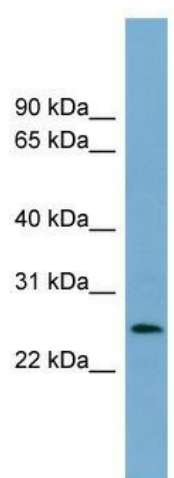
### LIN37 Rabbit Polyclonal Antibody

#### Product data:

Product Type:	Primary Antibodies
Applications:	WB
Recommended Dilution:	WB
Reactivity:	Human
Host:	Rabbit
Isotype:	IgG
Clonality:	Polyclonal
Immunogen:	The immunogen for anti-LIN37 antibody: synthetic peptide directed towards the middle region of human LIN37. Synthetic peptide located within the following region: HQRKRKRREMDDGLAEGGPQRSNTYVIKLFDRSVDLAQFSENTPLYPICR
Formulation:	Liquid. Purified antibody supplied in 1x PBS buffer with 0.09% (w/v) sodium azide and 2% sucrose.
Purification:	Affinity Purified
Conjugation:	Unconjugated
Storage:	Store at -20°C as received.
Stability:	Stable for 12 months from date of receipt.
Predicted Protein Size:	28 kDa
Gene Name:	lin-37 DREAM MuvB core complex component
Database Link:	<a href="#">NP_061977</a> <a href="#">Entrez Gene 55957 Human</a> <a href="#">Q96GY3</a>
Background:	This gene encodes a protein expressed in the eye.
Synonyms:	F25965; lin-37; ZK418.4
Note:	Immunogen Sequence Homology: Dog: 100%; Pig: 100%; Rat: 100%; Horse: 100%; Human: 100%; Mouse: 100%; Rabbit: 100%; Guinea pig: 100%; Bovine: 93%


[View online »](#)

## Product images:



WB Suggested Anti-LIN37 Antibody Titration: 0.2-1 ug/ml; Positive Control: 721\_B cell lysate