

## Product datasheet for **TA344813**

### Cytochrome P450 26B (CYP26B1) Rabbit Polyclonal Antibody

#### Product data:

Product Type:	Primary Antibodies
Applications:	WB
Recommended Dilution:	WB
Reactivity:	Human
Host:	Rabbit
Isotype:	IgG
Clonality:	Polyclonal
Immunogen:	The immunogen for anti-CYP26B1 antibody: synthetic peptide directed towards the N terminal of human CYP26B1. Synthetic peptide located within the following region: LRWAATRDKSKLPIPKGSMGFPLIGETGHWLLQGSGFQSSRREKYGNVF
Formulation:	Liquid. Purified antibody supplied in 1x PBS buffer with 0.09% (w/v) sodium azide and 2% sucrose. <i>Note that this product is shipped as lyophilized powder to China customers.</i>
Purification:	Affinity Purified
Conjugation:	Unconjugated
Storage:	Store at -20°C as received.
Stability:	Stable for 12 months from date of receipt.
Predicted Protein Size:	57 kDa
Gene Name:	cytochrome P450 family 26 subfamily B member 1
Database Link:	<a href="#">NP_063938</a> <a href="#">Entrez Gene 56603 Human</a> <a href="#">Q9NR63</a>
Background:	This gene encodes a member of the cytochrome P450 superfamily of enzymes. The cytochrome P450 proteins are monooxygenases that catalyze many reactions involved in drug metabolism and the synthesis of cholesterol, steroids and other lipids. The enzyme encoded by this gene is involved in the specific inactivation of all-trans-retinoic acid to hydroxylated forms, such as 4-oxo-, 4-OH-, and 18-OH-all-trans-retinoic acid.
Synonyms:	CYP26A2; P450RAI-2; P450RAI2; RHFCA



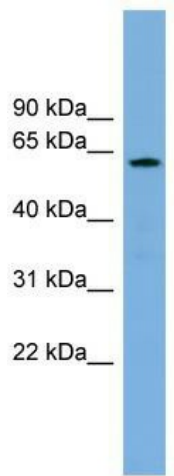
[View online »](#)

**Note:** Immunogen Sequence Homology: Dog: 100%; Pig: 100%; Rat: 100%; Horse: 100%; Human: 100%; Mouse: 100%; Bovine: 100%; Rabbit: 100%; Guinea pig: 100%

**Protein Families:** Druggable Genome, P450

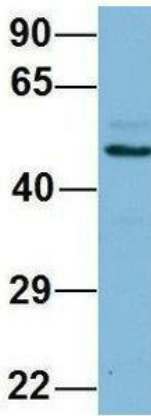
**Protein Pathways:** Retinol metabolism

**Product images:**



WB Suggested Anti-CYP26B1 Antibody Titration: 0.2-1 ug/ml; Positive Control: Jurkat cell lysate

**CYP26B1**



Rabbit Anti-CYP26B1  
 Sample Type: Human Fetal Brain  
 Antibody Concentration: 1ug/mL

Host: Rabbit; Target Name: CYP26B1; Sample Tissue: Human Fetal Brain; Antibody Dilution: 1.0 ug/ml