

Product datasheet for **TA344810**

FSTL5 Rabbit Polyclonal Antibody

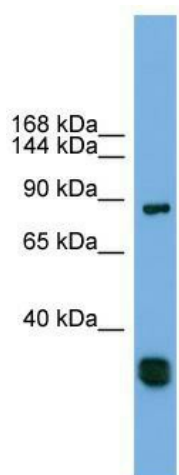
Product data:

Product Type:	Primary Antibodies
Applications:	WB
Recommended Dilution:	WB
Reactivity:	Human
Host:	Rabbit
Isotype:	IgG
Clonality:	Polyclonal
Immunogen:	The immunogen for anti-FSTL5 antibody: synthetic peptide directed towards the middle region of human FSTL5. Synthetic peptide located within the following region: NRQIQDSGLFGQYLMTPSKDSLFDGRLNKLNCEITEVEKGNTVIWVGD
Formulation:	Liquid. Purified antibody supplied in 1x PBS buffer with 0.09% (w/v) sodium azide and 2% sucrose. <i>Note that this product is shipped as lyophilized powder to China customers.</i>
Purification:	Affinity Purified
Conjugation:	Unconjugated
Storage:	Store at -20°C as received.
Stability:	Stable for 12 months from date of receipt.
Predicted Protein Size:	92 kDa
Gene Name:	follistatin like 5
Database Link:	NP_001121900 Entrez Gene 56884 Human Q8N475
Background:	The function of this protein remains unknown.
Synonyms:	DKFZp566D234; KIAA1263
Note:	Immunogen Sequence Homology: Dog: 100%; Pig: 100%; Rat: 100%; Human: 100%; Mouse: 100%; Rabbit: 100%; Guinea pig: 92%; Zebrafish: 91%
Protein Families:	Secreted Protein



[View online »](#)

Product images:



WB Suggested Anti-FSTL5 Antibody Titration: 0.2-1 ug/ml; Positive Control: Human heart