

## Product datasheet for **TA344807**

### GRASP1 (GRIPAP1) Rabbit Polyclonal Antibody

#### Product data:

|                         |  |
|-------------------------|--|
| Product Type:           | Primary Antibodies   |
| Applications:           | WB   |
| Recommended Dilution:   | WB   |
| Reactivity:             | Human  |
| Host:                   | Rabbit   |
| Isotype:                | IgG  |
| Clonality:              | Polyclonal   |
| Immunogen:              | The immunogen for anti-GRIPAP1 antibody: synthetic peptide directed towards the N terminal of human GRIPAP1. Synthetic peptide located within the following region:<br>ENTALQKNVAALQERYGKEAGKFSVASEGQGDPPGGPAPT <del>V</del> LAPMPLAEV   |
| Formulation:            | Liquid. Purified antibody supplied in 1x PBS buffer with 0.09% (w/v) sodium azide and 2% sucrose.<br><i>Note that this product is shipped as lyophilized powder to China customers.</i>  |
| Purification:           | Affinity Purified  |
| Conjugation:            | Unconjugated   |
| Storage:                | Store at -20°C as received.  |
| Stability:              | Stable for 12 months from date of receipt.   |
| Predicted Protein Size: | 96 kDa   |
| Gene Name:              | GRIP1 associated protein 1   |
| Database Link:          | <a href="#">NP_064522</a><br><a href="#">Entrez Gene 56850 Human Q4V328</a>  |
| Background:             | This gene encodes a guanine nucleotide exchange factor for the Ras family of small G proteins (RasGEF). In brain studies, the encoded protein was found with the GRIP/AMPA receptor complex. Multiple alternatively spliced transcript variants have been described that encode different protein isoforms; however, the full-length nature and biological validity of all of these variants have not been determined. |
| Synonyms:               | GRASP-1  |

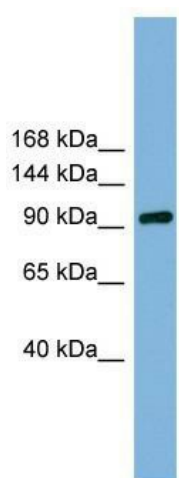


[View online »](#)

**Note:** Immunogen Sequence Homology: Human: 100%; Pig: 92%; Bovine: 92%

**Protein Families:** Druggable Genome

**Product images:**



WB Suggested Anti-GRIPAP1 Antibody Titration:  
0.2-1 ug/ml; Positive Control: Hela cell lysate