

Product datasheet for **TA344806**

BDH2 Rabbit Polyclonal Antibody

Product data:

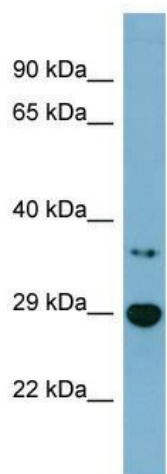
Product Type:	Primary Antibodies
Applications:	WB
Recommended Dilution:	WB
Reactivity:	Human
Host:	Rabbit
Isotype:	IgG
Clonality:	Polyclonal
Immunogen:	The immunogen for anti-BDH2 antibody: synthetic peptide directed towards the middle region of human BDH2. Synthetic peptide located within the following region: NRCVYSTTKAAVIGLTKSVAADFIQQGIRCNCVCPGTVDTPSLQERIQR
Formulation:	Liquid. Purified antibody supplied in 1x PBS buffer with 0.09% (w/v) sodium azide and 2% sucrose. <i>Note that this product is shipped as lyophilized powder to China customers.</i>
Purification:	Affinity Purified
Conjugation:	Unconjugated
Storage:	Store at -20°C as received.
Stability:	Stable for 12 months from date of receipt.
Predicted Protein Size:	27 kDa
Gene Name:	3-hydroxybutyrate dehydrogenase, type 2
Database Link:	NP_064524 Entrez Gene 56898 Human Q9BUT1
Background:	The function of this protein remains unknown.
Synonyms:	DHRS6; EFA6R; PRO20933; SDR15C1; UCPA-OR; UNQ6308
Note:	Immunogen Sequence Homology: Pig: 100%; Rat: 100%; Horse: 100%; Human: 100%; Mouse: 100%; Bovine: 100%; Rabbit: 100%; Zebrafish: 93%; Guinea pig: 93%
Protein Families:	Druggable Genome



[View online »](#)

Protein Pathways: Butanoate metabolism, Metabolic pathways, Synthesis and degradation of ketone bodies

Product images:



WB Suggested Anti-BDH2 Antibody Titration: 0.2-1 ug/ml; Positive Control: Jurkat cell lysate