

Product datasheet for **TA344805**

FEM 1C (FEM1C) Rabbit Polyclonal Antibody

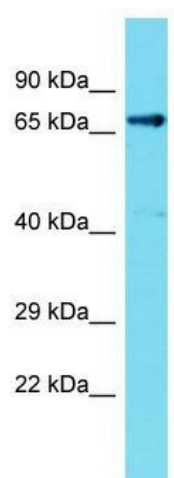
Product data:

Product Type:	Primary Antibodies
Applications:	WB
Recommended Dilution:	WB
Reactivity:	Rat
Host:	Rabbit
Isotype:	IgG
Clonality:	Polyclonal
Immunogen:	The immunogen for Anti-Fem1c antibody is: synthetic peptide directed towards the C-terminal region of Rat Fem1c. Synthetic peptide located within the following region: LHKQTASDLLDEKEIAKNLIQPINHTTLQCLAARVIVNHRIYYKGNIPEK
Formulation:	Liquid. Purified antibody supplied in 1x PBS buffer with 0.09% (w/v) sodium azide and 2% sucrose. <i>Note that this product is shipped as lyophilized powder to China customers.</i>
Purification:	Affinity Purified
Conjugation:	Unconjugated
Storage:	Store at -20°C as received.
Stability:	Stable for 12 months from date of receipt.
Predicted Protein Size:	67 kDa
Gene Name:	fem-1 homolog C
Database Link:	NP_064562 Entrez Gene 302288 Rat Q96JP0
Background:	The function of this protein remains unknown.
Synonyms:	EUROIMAGE686608; EUROIMAGE783647; FEM1A
Note:	Immunogen Sequence Homology: Pig: 100%; Rat: 100%; Horse: 100%; Human: 100%; Mouse: 100%; Bovine: 100%; Rabbit: 100%



[View online »](#)

Product images:



Host: Rabbit; Target Name: Fem1c; Sample
Tissue: Rat Kidney lysates; Antibody Dilution: 1.0
ug/ml