

Product datasheet for **TA344804**

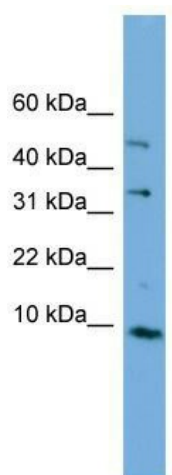
C16orf61 (CMC2) Rabbit Polyclonal Antibody

Product data:

Product Type:	Primary Antibodies
Applications:	WB
Recommended Dilution:	WB
Reactivity:	Human
Host:	Rabbit
Isotype:	IgG
Clonality:	Polyclonal
Immunogen:	The immunogen for anti-C16orf61 antibody: synthetic peptide directed towards the middle region of human C16orf61. Synthetic peptide located within the following region: NILKFFGYCNDVDRELKCLKNEYVENRTKSREHGIAMRKKLFNPPEESE
Formulation:	Liquid. Purified antibody supplied in 1x PBS buffer with 0.09% (w/v) sodium azide and 2% sucrose. <i>Note that this product is shipped as lyophilized powder to China customers.</i>
Purification:	Affinity Purified
Conjugation:	Unconjugated
Storage:	Store at -20°C as received.
Stability:	Stable for 12 months from date of receipt.
Predicted Protein Size:	9 kDa
Gene Name:	C-x9-C motif containing 2
Database Link:	NP_064573 Entrez Gene 56942 Human Q9NRP2
Background:	The function of this protein remains unknown.
Synonyms:	2310061C15Rik; C16orf61; DC13
Note:	Immunogen Sequence Homology: Human: 100%; Dog: 86%; Pig: 79%; Horse: 79%; Mouse: 79%; Guinea pig: 79%; Rat: 77%; Bovine: 77%



[View online »](#)

Product images:

WB Suggested Anti-C16orf61 Antibody Titration:
0.2-1 ug/ml; ELISA Titer: 1:1562500; Positive
Control: Human kidney