

## Product datasheet for **TA344801**

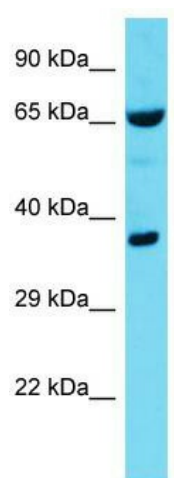
### RNPEP Rabbit Polyclonal Antibody

#### Product data:

|                         |  |
|-------------------------|--|
| Product Type:           | Primary Antibodies   |
| Applications:           | WB   |
| Recommended Dilution:   | WB   |
| Reactivity:             | Mouse  |
| Host:                   | Rabbit   |
| Isotype:                | IgG  |
| Clonality:              | Polyclonal   |
| Immunogen:              | The immunogen for Anti-Rnpep antibody is: synthetic peptide directed towards the C-terminal region of Mouse Rnpep. Synthetic peptide located within the following region: TCLEAATGRALLRQHNMVSGEENPLNKLRVKIEPGVDPDDTYNETPYEKG |
| Formulation:            | Liquid. Purified antibody supplied in 1x PBS buffer with 0.09% (w/v) sodium azide and 2% sucrose.<br><i>Note that this product is shipped as lyophilized powder to China customers.</i>                                      |
| Purification:           | Affinity Purified  |
| Conjugation:            | Unconjugated   |
| Storage:                | Store at -20°C as received.  |
| Stability:              | Stable for 12 months from date of receipt.   |
| Predicted Protein Size: | 67 kDa   |
| Gene Name:              | arginyl aminopeptidase   |
| Database Link:          | <a href="#">NP_064601</a><br><a href="#">Entrez Gene 215615 Mouse Q9H4A4</a>   |
| Background:             | The function of this protein remains unknown.  |
| Synonyms:               | DKFZp547H084   |
| Note:                   | Immunogen Sequence Homology: Dog: 100%; Pig: 100%; Rat: 100%; Horse: 100%; Human: 100%; Mouse: 100%; Bovine: 100%; Rabbit: 100%; Zebrafish: 100%; Guinea pig: 100%   |
| Protein Families:       | Druggable Genome, Protease, Secreted Protein   |



[View online »](#)

**Product images:**


Host: Rabbit; Target Name: Rnpep; Sample  
Tissue: Mouse Lung lysates; Antibody Dilution:  
1.0 ug/ml