

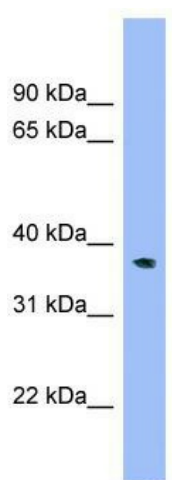
Product datasheet for **TA344800**

ADPRM Rabbit Polyclonal Antibody

Product data:

Product Type:	Primary Antibodies
Applications:	WB
Recommended Dilution:	WB
Reactivity:	Human
Host:	Rabbit
Isotype:	IgG
Clonality:	Polyclonal
Immunogen:	The immunogen for anti-C17orf48 antibody: synthetic peptide directed towards the N terminal of human C17orf48. Synthetic peptide located within the following region: MDDKPNPEALSDSSERLFSFGVIADVQFADLEDGFNFQGTRRRYYRHSL
Formulation:	Liquid. Purified antibody supplied in 1x PBS buffer with 0.09% (w/v) sodium azide and 2% sucrose.
Purification:	Affinity Purified
Conjugation:	Unconjugated
Storage:	Store at -20°C as received.
Stability:	Stable for 12 months from date of receipt.
Predicted Protein Size:	39 kDa
Gene Name:	ADP-ribose/CDP-alcohol diphosphatase, manganese dependent
Database Link:	NP_064618 Entrez Gene 56985 Human Q3LIE5
Background:	The function of this protein remains unknown.
Synonyms:	C17orf48; MDS006; NBLA03831
Note:	Immunogen Sequence Homology: Human: 100%; Horse: 79%


[View online »](#)

Product images:

WB Suggested Anti-C17orf48 Antibody Titration:
0.2-1 ug/ml; Positive Control: HepG2 cell lysate