

Product datasheet for TA344794

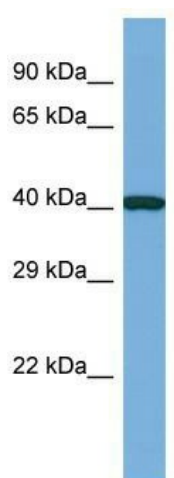
CASS4 Rabbit Polyclonal Antibody

Product data:

Product Type:	Primary Antibodies
Applications:	WB
Recommended Dilution:	WB
Reactivity:	Human
Host:	Rabbit
Isotype:	IgG
Clonality:	Polyclonal
Immunogen:	The immunogen for Anti-CASS4 antibody is: synthetic peptide directed towards the N-terminal region of Human CASS4. Synthetic peptide located within the following region: ALLARALYDNCPCDSELAFAFRGDILTILEQHVPESEGWWKCLLHGRQGL
Formulation:	Liquid. Purified antibody supplied in 1x PBS buffer with 0.09% (w/v) sodium azide and 2% sucrose. <i>Note that this product is shipped as lyophilized powder to China customers.</i>
Purification:	Affinity Purified
Conjugation:	Unconjugated
Storage:	Store at -20°C as received.
Stability:	Stable for 12 months from date of receipt.
Predicted Protein Size:	38 kDa
Gene Name:	Cas scaffolding protein family member 4
Database Link:	NP_001157588 Entrez Gene 57091 Human Q9NQ75
Background:	CASS4 is a docking protein that plays a role in tyrosine kinase-based signaling related to cell adhesion and cell spreading. It regulates PTK2/FAK1 activity, focal adhesion integrity, and cell spreading.
Synonyms:	C20orf32; CAS4; HEFL; HEPL
Note:	Immunogen Sequence Homology: Rat: 100%; Human: 100%; Mouse: 100%; Rabbit: 100%; Pig: 92%; Bovine: 92%; Guinea pig: 92%; Dog: 91%



[View online »](#)

Product images:

Host: Rabbit; Target Name: CASS4; Sample Tissue: RPMI-8226 Whole Cell lysates; Antibody Dilution: 1.0 ug/ml; CASS4 is supported by BioGPS gene expression data to be expressed in RPMI 8226