

Product datasheet for **TA344791**

PLSCR3 Rabbit Polyclonal Antibody

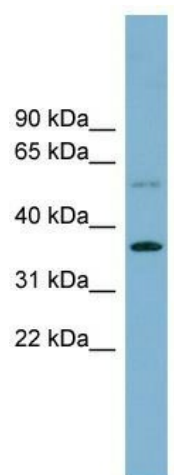
Product data:

| | |
|-------------------------|--|
| Product Type: | Primary Antibodies |
| Applications: | WB |
| Recommended Dilution: | WB |
| Reactivity: | Human |
| Host: | Rabbit |
| Isotype: | IgG |
| Clonality: | Polyclonal |
| Immunogen: | The immunogen for anti-PLSCR3 antibody: synthetic peptide directed towards the middle region of human PLSCR3. Synthetic peptide located within the following region: GCGTDTNFEVKTRDESRSVGRISKQWGGLVREALTDADDFGLQFPLDLDV |
| Formulation: | Liquid. Purified antibody supplied in 1x PBS buffer with 0.09% (w/v) sodium azide and 2% sucrose. <i>Note that this product is shipped as lyophilized powder to China customers.</i> |
| Purification: | Affinity Purified |
| Conjugation: | Unconjugated |
| Storage: | Store at -20°C as received. |
| Stability: | Stable for 12 months from date of receipt. |
| Predicted Protein Size: | 32 kDa |
| Gene Name: | phospholipid scramblase 3 |
| Database Link: | NP_065093 Entrez Gene 57048 Human Q9NRY6 |
| Background: | PLSCR3 may mediate accelerated ATP-independent bidirectional transbilayer migration of phospholipids upon binding calcium ions that results in a loss of phospholipid asymmetry in the plasma membrane. PLSCR3 may play a central role in the initiation of fibr |
| Synonyms: | PLSCR3 |
| Note: | Immunogen Sequence Homology: Dog: 100%; Pig: 100%; Rat: 100%; Horse: 100%; Human: 100%; Mouse: 100%; Rabbit: 100%; Guinea pig: 100%; Bovine: 93%; Zebrafish: 85% |



[View online »](#)

Product images:



WB Suggested Anti-PLSCR3 Antibody Titration:
0.2-1 ug/ml; Positive Control: Human Placenta