

Product datasheet for **TA344790**

CPA6 Rabbit Polyclonal Antibody

Product data:

Product Type:	Primary Antibodies
Applications:	WB
Recommended Dilution:	WB
Reactivity:	Human
Host:	Rabbit
Isotype:	IgG
Clonality:	Polyclonal
Immunogen:	The immunogen for anti-CPA6 antibody: synthetic peptide directed towards the middle region of human CPA6. Synthetic peptide located within the following region: QSVYGVRYRYGPASTTLYVSSGSSMDWAYKNGIPYAFELRDTGYFGFL
Formulation:	Liquid. Purified antibody supplied in 1x PBS buffer with 0.09% (w/v) sodium azide and 2% sucrose. <i>Note that this product is shipped as lyophilized powder to China customers.</i>
Purification:	Affinity Purified
Conjugation:	Unconjugated
Storage:	Store at -20°C as received.
Stability:	Stable for 12 months from date of receipt.
Predicted Protein Size:	51 kDa
Gene Name:	carboxypeptidase A6
Database Link:	NP_065094 Entrez Gene 57094 Human Q8N4T0
Background:	The protein encoded by this gene belongs to the family of carboxypeptidases, which catalyze the release of C-terminal amino acid, and have functions ranging from digestion of food to selective biosynthesis of neuroendocrine peptides. Polymorphic variants and a reciprocal translocation t(6;8)(q26;q13) involving this gene, have been associated with Duane retraction syndrome.
Synonyms:	CPAH; ETL5; FEB11

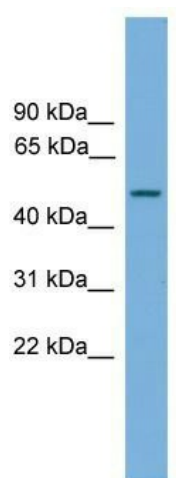


[View online »](#)

Note: Immunogen Sequence Homology: Pig: 100%; Rat: 100%; Human: 100%; Mouse: 100%; Zebrafish: 100%; Guinea pig: 100%; Dog: 93%; Horse: 93%; Bovine: 93%; Rabbit: 93%

Protein Families: Protease, Secreted Protein

Product images:



WB Suggested Anti-CPA6 Antibody Titration: 0.2-1 ug/ml; ELISA Titer: 1:1562500; Positive Control: 721_B cell lysate