

Product datasheet for **TA344787**

RAB25 Rabbit Polyclonal Antibody

Product data:

Product Type:	Primary Antibodies
Applications:	WB
Recommended Dilution:	WB
Reactivity:	Human
Host:	Rabbit
Isotype:	IgG
Clonality:	Polyclonal
Immunogen:	The immunogen for anti-RAB25 antibody: synthetic peptide directed towards the middle region of human RAB25. Synthetic peptide located within the following region: LKELYDHAEATIVVMLVGNKSDLSQAREVPTTEARMFAENGLLFLETS
Formulation:	Liquid. Purified antibody supplied in 1x PBS buffer with 0.09% (w/v) sodium azide and 2% sucrose. <i>Note that this product is shipped as lyophilized powder to China customers.</i>
Purification:	Affinity Purified
Conjugation:	Unconjugated
Storage:	Store at -20°C as received.
Stability:	Stable for 12 months from date of receipt.
Predicted Protein Size:	23 kDa
Gene Name:	RAB25, member RAS oncogene family
Database Link:	NP_065120 Entrez Gene 57111 Human P57735
Background:	RAB proteins, such as RAB25, are members of the RAS superfamily of small GTPases that are involved in membrane trafficking. Members of the RAB11 subfamily, including RAB25, control the return of internalized membrane-associated moieties to the cell surface (Caswell et al., 2007 [PubMed 17925226]).
Synonyms:	CATX-8; RAB11C

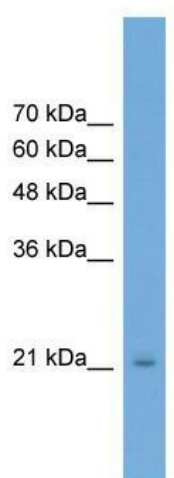


[View online »](#)

Note: Immunogen Sequence Homology: Rat: 100%; Horse: 100%; Human: 100%; Mouse: 100%; Rabbit: 100%; Dog: 93%; Pig: 93%; Bovine: 93%; Guinea pig: 93%; Yeast: 79%

Protein Families: Druggable Genome, Transcription Factors

Product images:



WB Suggested Anti-RAB25 Antibody Titration: 0.2-1 ug/ml; ELISA Titer: 1:312500; Positive Control: Transfected 293T