

Product datasheet for **TA344785**

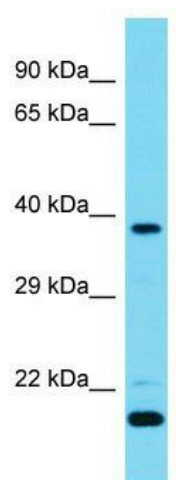
CAMK1D Rabbit Polyclonal Antibody

Product data:

Product Type:	Primary Antibodies
Applications:	WB
Recommended Dilution:	WB
Reactivity:	Mouse
Host:	Rabbit
Isotype:	IgG
Clonality:	Polyclonal
Immunogen:	The immunogen for Anti-Camk1d antibody is: synthetic peptide directed towards the N-terminal region of Mouse Camk1d. Synthetic peptide located within the following region: LAEEKATGKLFVAVKCIKKALKGKESSIENEIAVLRKIKHENIVALEDIY
Formulation:	Liquid. Purified antibody supplied in 1x PBS buffer with 0.09% (w/v) sodium azide and 2% sucrose. <i>Note that this product is shipped as lyophilized powder to China customers.</i>
Purification:	Affinity Purified
Conjugation:	Unconjugated
Storage:	Store at -20°C as received.
Stability:	Stable for 12 months from date of receipt.
Predicted Protein Size:	42 kDa
Gene Name:	calcium/calmodulin dependent protein kinase ID
Database Link:	NP_065130 Entrez Gene 227541 Mouse Q8IU85
Background:	The function of this protein remains unknown.
Synonyms:	CaM-K1; CaMKID; CKLiK
Note:	Immunogen Sequence Homology: Dog: 100%; Pig: 100%; Rat: 100%; Human: 100%; Mouse: 100%; Rabbit: 100%; Zebrafish: 100%; Guinea pig: 100%; Horse: 79%; Bovine: 79%
Protein Families:	Druggable Genome, Protein Kinase



[View online »](#)

Product images:

Host: Rabbit; Target Name: Camk1d; Sample
Tissue: Mouse Testis lysates; Antibody Dilution:
1.0 ug/ml