

Product datasheet for **TA344784**

CAMK1D Rabbit Polyclonal Antibody

Product data:

Product Type:	Primary Antibodies
Applications:	WB
Recommended Dilution:	WB
Reactivity:	Human
Host:	Rabbit
Isotype:	IgG
Clonality:	Polyclonal
Immunogen:	The immunogen for anti-CAMK1D antibody: synthetic peptide directed towards the middle region of human CAMK1D. Synthetic peptide located within the following region: KNIHESVSAQIRKNFAKSKWRQAFNATAVVRHMRKLHLGSSLDSSNASVS
Formulation:	Liquid. Purified antibody supplied in 1x PBS buffer with 0.09% (w/v) sodium azide and 2% sucrose. <i>Note that this product is shipped as lyophilized powder to China customers.</i>
Purification:	Affinity Purified
Conjugation:	Unconjugated
Storage:	Store at -20°C as received.
Stability:	Stable for 12 months from date of receipt.
Predicted Protein Size:	42 kDa
Gene Name:	calcium/calmodulin dependent protein kinase ID
Database Link:	NP_705718 Entrez Gene 57118 Human Q8IU85
Background:	This gene encodes a member of the Ca ²⁺ /calmodulin-dependent protein kinase 1 subfamily of serine/threonine kinases. The encoded protein may be involved in the regulation of granulocyte function through the chemokine signal transduction pathway. Alternatively spliced transcript variants encoding different isoforms of this gene have been described.
Synonyms:	CaM-K1; CaMKID; CKLiK

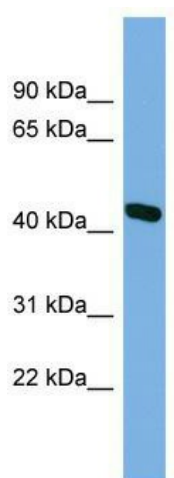


[View online »](#)

Note: Immunogen Sequence Homology: Dog: 100%; Pig: 100%; Horse: 100%; Human: 100%; Bovine: 100%; Rabbit: 93%; Rat: 86%; Mouse: 86%; Guinea pig: 86%

Protein Families: Druggable Genome, Protein Kinase

Product images:



WB Suggested Anti-CAMK1D Antibody Titration:
0.2-1 ug/ml; ELISA Titer: 1:312500; Positive
Control: HepG2 cell lysate