

Product datasheet for TA344783

LYRM4 Rabbit Polyclonal Antibody

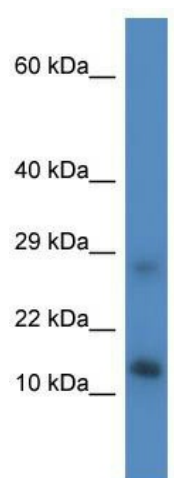
Product data:

Product Type:	Primary Antibodies
Applications:	WB
Recommended Dilution:	WB
Reactivity:	Mouse
Host:	Rabbit
Isotype:	IgG
Clonality:	Polyclonal
Immunogen:	The immunogen for anti-Lyrm4 antibody: synthetic peptide corresponding to a region of Mouse. Synthetic peptide located within the following region: VRRIRDAFRENKNVKDPVEIQALVNBKAKRDLEIIRRQVHIGQLYSTDKLI
Formulation:	Liquid. Purified antibody supplied in 1x PBS buffer with 0.09% (w/v) sodium azide and 2% sucrose. <i>Note that this product is shipped as lyophilized powder to China customers.</i>
Purification:	Affinity Purified
Conjugation:	Unconjugated
Storage:	Store at -20°C as received.
Stability:	Stable for 12 months from date of receipt.
Predicted Protein Size:	10 kDa
Gene Name:	LYR motif containing 4
Database Link:	NP_065141 Entrez Gene 380840 Mouse Q9HD34
Background:	Lyrm4 is required for nuclear and mitochondrial iron-sulfur protein biosynthesis.
Synonyms:	C6orf149; CGI-203; COXPD19; ISD11
Note:	Immunogen Sequence Homology: Horse: 100%; Human: 100%; Mouse: 100%; Rabbit: 100%; Pig: 93%; Rat: 93%; Bovine: 93%; Guinea pig: 93%



[View online »](#)

Product images:



WB Suggested Anti-Lyrm4 Antibody; Titration: 1.0 ug/ml; Positive Control: Mouse Liver