

Product datasheet for **TA344778**

CaMKI gamma (CAMK1G) Rabbit Polyclonal Antibody

Product data:

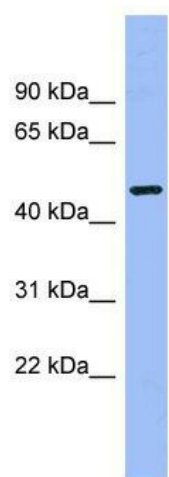
Product Type:	Primary Antibodies
Applications:	WB
Recommended Dilution:	WB
Reactivity:	Human
Host:	Rabbit
Isotype:	IgG
Clonality:	Polyclonal
Immunogen:	The immunogen for anti-CAMK1G antibody: synthetic peptide directed towards the middle region of human CAMK1G. Synthetic peptide located within the following region: KDFICHLLEKDPNERYTCEKALSHPWIDGNTALHRDIYPSVSLQIQNFA
Formulation:	Liquid. Purified antibody supplied in 1x PBS buffer with 0.09% (w/v) sodium azide and 2% sucrose. <i>Note that this product is shipped as lyophilized powder to China customers.</i>
Purification:	Affinity Purified
Conjugation:	Unconjugated
Storage:	Store at -20°C as received.
Stability:	Stable for 12 months from date of receipt.
Predicted Protein Size:	53 kDa
Gene Name:	calcium/calmodulin dependent protein kinase IG
Database Link:	NP_065172 Entrez Gene 57172 Human Q96NX5
Background:	This gene encodes a protein similar to calcium/calmodulin dependent protein kinase, however, its exact function is not known.
Synonyms:	CLICK3; CLICKIII; dj272L16.1; VWS1
Note:	Immunogen Sequence Homology: Dog: 100%; Pig: 100%; Rat: 100%; Horse: 100%; Human: 100%; Mouse: 100%; Rabbit: 100%; Guinea pig: 100%; Bovine: 93%



[View online »](#)

Protein Families: Druggable Genome, Protein Kinase

Product images:



WB Suggested Anti-CAMK1G Antibody Titration:
0.2-1 ug/ml; ELISA Titer: 1:1562500; Positive
Control: Jurkat cell lysate