

Product datasheet for **TA344776**

ACTR3B Rabbit Polyclonal Antibody

Product data:

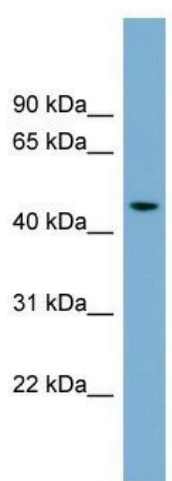
Product Type:	Primary Antibodies
Applications:	WB
Recommended Dilution:	WB
Reactivity:	Human
Host:	Rabbit
Isotype:	IgG
Clonality:	Polyclonal
Immunogen:	The immunogen for anti-ACTR3B antibody: synthetic peptide directed towards the N terminal of human ACTR3B. Synthetic peptide located within the following region: DHYFLMTEPPLNTPENREYLAEIMFESFNVPGLYIAVQAVLALAASWTSR
Formulation:	Liquid. Purified antibody supplied in 1x PBS buffer with 0.09% (w/v) sodium azide and 2% sucrose. <i>Note that this product is shipped as lyophilized powder to China customers.</i>
Purification:	Affinity Purified
Conjugation:	Unconjugated
Storage:	Store at -20°C as received.
Stability:	Stable for 12 months from date of receipt.
Predicted Protein Size:	47 kDa
Gene Name:	ARP3 actin-related protein 3 homolog B (yeast)
Database Link:	NP_065178 Entrez Gene 57180 Human Q9P1U1
Background:	ACTR3B plays a role in the organization of the actin cytoskeleton. ACTR3B may function as ATP-binding component of the Arp2/3 complex which is involved in regulation of actin polymerization and together with an activating nucleation-promoting factor (NPF) mediates the formation of branched actin networks. ACTR3B may decrease the metastatic potential of tumors.
Synonyms:	ARP3BETA; ARP11



[View online »](#)

Note: Immunogen Sequence Homology: Dog: 100%; Pig: 100%; Rat: 100%; Horse: 100%; Human: 100%; Mouse: 100%; Bovine: 100%; Rabbit: 100%; Zebrafish: 100%; Guinea pig: 100%

Product images:



WB Suggested Anti-ACTR3B Antibody Titration:
0.2-1 ug/ml; ELISA Titer: 1:312500; Positive
Control: 721_B cell lysate