

Product datasheet for **TA344775**

SMEK2 (PPP4R3B) Rabbit Polyclonal Antibody

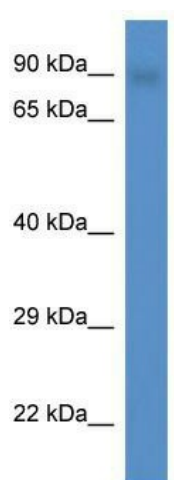
Product data:

Product Type:	Primary Antibodies
Applications:	WB
Recommended Dilution:	WB
Reactivity:	Mouse
Host:	Rabbit
Isotype:	IgG
Clonality:	Polyclonal
Immunogen:	The immunogen for anti-Smek2 antibody: synthetic peptide corresponding to a region of Mouse. Synthetic peptide located within the following region: DSYEKFMETKKAKESDKENLPKRASSGGFKFTFSHSPSATNGTNSTNSK
Formulation:	Liquid. Purified antibody supplied in 1x PBS buffer with 0.09% (w/v) sodium azide and 2% sucrose. <i>Note that this product is shipped as lyophilized powder to China customers.</i>
Purification:	Affinity Purified
Conjugation:	Unconjugated
Storage:	Store at -20°C as received.
Stability:	Stable for 12 months from date of receipt.
Predicted Protein Size:	90 kDa
Gene Name:	protein phosphatase 4 regulatory subunit 3B
Database Link:	NP_001116436 Entrez Gene 57223 Human Q5MIZ7
Background:	Smek2 is a regulatory subunit of serine/threonine-protein phosphatase 4 (PP4). It may regulate the activity of PPP4C at centrosomal microtubule organizing centers.
Synonyms:	FLFL2; PP4R3B; PSY2; SMEK2; smk1
Note:	Immunogen Sequence Homology: Dog: 100%; Pig: 100%; Rat: 100%; Horse: 100%; Human: 100%; Mouse: 100%; Bovine: 100%; Rabbit: 100%; Guinea pig: 100%



[View online »](#)

Product images:



WB Suggested Anti-Smek2 Antibody; Titration: 1.0 ug/ml; Positive Control: Mouse Heart