

Product datasheet for **TA344774**

C11orf16 Rabbit Polyclonal Antibody

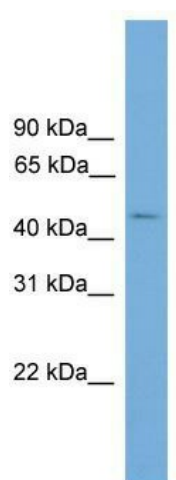
Product data:

Product Type:	Primary Antibodies
Applications:	WB
Recommended Dilution:	WB
Reactivity:	Human
Host:	Rabbit
Isotype:	IgG
Clonality:	Polyclonal
Immunogen:	The immunogen for anti-C11orf16 antibody: synthetic peptide directed towards the middle region of human C11orf16. Synthetic peptide located within the following region: EPCLGKPGTRYSNICKEEKDHHKQRAQTAVVGTTKELVSKATHMKPPRTP
Formulation:	Liquid. Purified antibody supplied in 1x PBS buffer with 0.09% (w/v) sodium azide and 2% sucrose.
Purification:	Affinity Purified
Conjugation:	Unconjugated
Storage:	Store at -20°C as received.
Stability:	Stable for 12 months from date of receipt.
Predicted Protein Size:	51 kDa
Gene Name:	chromosome 11 open reading frame 16
Database Link:	NP_065694 Entrez Gene 56673 Human Q9NQ32
Background:	The function of C11orf16 remains unknown.
Synonyms:	chromosome 11 open reading frame 16
Note:	Immunogen Sequence Homology: Human: 100%



[View online »](#)

Product images:



WB Suggested Anti-C11orf16 Antibody Titration:
0.2-1 ug/ml; Positive Control: Transfected 293T