

Product datasheet for **TA344773**

Pellino 1 (PELI1) Rabbit Polyclonal Antibody

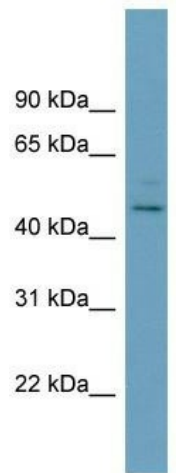
Product data:

Product Type:	Primary Antibodies
Applications:	WB
Recommended Dilution:	WB
Reactivity:	Human
Host:	Rabbit
Isotype:	IgG
Clonality:	Polyclonal
Immunogen:	The immunogen for anti-PELI1 antibody: synthetic peptide directed towards the N terminal of human PELI1. Synthetic peptide located within the following region: ESPIDFVVTDTVPGSQSNSDTQSVQSTISRACRIICERNPPFTARIYAA
Formulation:	Liquid. Purified antibody supplied in 1x PBS buffer with 0.09% (w/v) sodium azide and 2% sucrose. <i>Note that this product is shipped as lyophilized powder to China customers.</i>
Purification:	Affinity Purified
Conjugation:	Unconjugated
Storage:	Store at -20°C as received.
Stability:	Stable for 12 months from date of receipt.
Predicted Protein Size:	46 kDa
Gene Name:	pellino E3 ubiquitin protein ligase 1
Database Link:	NP_065702 Entrez Gene 57162 Human Q96FA3
Background:	PELI1 is a scaffold protein involved in the IL-1 signaling pathway via its interaction with the complex containing IRAK kinases and TRAF6. PELI1 is required for NF-kappa-B activation and IL-8 gene expression in response to IL-1.
Synonyms:	DKFZp686C18116; MGC50990
Note:	Immunogen Sequence Homology: Dog: 100%; Pig: 100%; Rat: 100%; Horse: 100%; Human: 100%; Mouse: 100%; Bovine: 100%; Rabbit: 100%; Zebrafish: 100%; Guinea pig: 100%



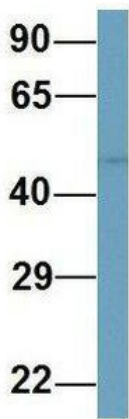
[View online »](#)

Product images:



WB Suggested Anti-PELI1 Antibody Titration: 0.2-1 ug/ml; ELISA Titer: 1:312500; Positive Control: HepG2 cell lysate

PELI1



Rabbit Anti-PELI1
 Sample Type: Human 721_B
 Antibody Concentration: 1ug/mL

Host: Rabbit; Target Name: PELI1; Sample Tissue: Human 721_B; Antibody Dilution: 1.0 ug/ml; PELI1 is supported by BioGPS gene expression data to be expressed in 721_B