

Product datasheet for **TA344771**

RAB22A Rabbit Polyclonal Antibody

Product data:

Product Type:	Primary Antibodies
Applications:	IHC, WB
Recommended Dilution:	WB
Reactivity:	Human, Murine
Host:	Rabbit
Isotype:	IgG
Clonality:	Polyclonal
Immunogen:	The immunogen for anti-RAB22A antibody: synthetic peptide directed towards the middle region of human RAB22A. Synthetic peptide located within the following region: IFVETSAKNAININELFIEISRRIPSTDANLPSGGKGFKLRRQPSEPKRS
Formulation:	Liquid. Purified antibody supplied in 1x PBS buffer with 0.09% (w/v) sodium azide and 2% sucrose. <i>Note that this product is shipped as lyophilized powder to China customers.</i>
Purification:	Affinity Purified
Conjugation:	Unconjugated
Storage:	Store at -20°C as received.
Stability:	Stable for 12 months from date of receipt.
Predicted Protein Size:	22 kDa
Gene Name:	RAB22A, member RAS oncogene family
Database Link:	NP_065724 Entrez Gene 57403 Human Q9UL26
Background:	The protein encoded by this gene is a member of the RAB family of small GTPases. The GTP-bound form of the encoded protein has been shown to interact with early-endosomal antigen 1, and may be involved in the trafficking of and interaction between endosome
Synonyms:	MGC16770
Note:	Immunogen Sequence Homology: Dog: 100%; Pig: 100%; Rat: 100%; Horse: 100%; Human: 100%; Mouse: 100%; Bovine: 100%; Rabbit: 100%; Zebrafish: 100%; Guinea pig: 93%

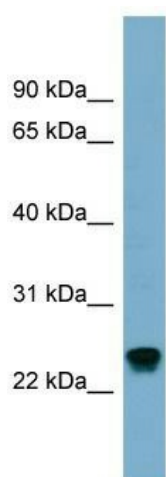


[View online »](#)

Protein Families: Druggable Genome

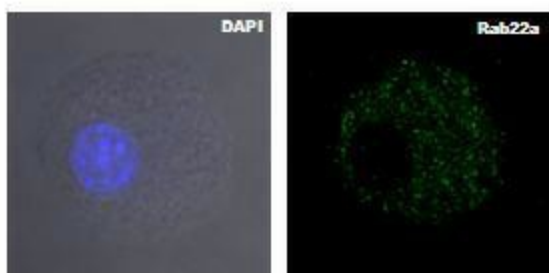
Protein Pathways: Endocytosis

Product images:



RAB22A

WB Suggested Anti-RAB22A Antibody Titration: 0.2-1 ug/ml; Positive Control: MCF7 cell lysate RAB22A is strongly supported by BioGPS gene expression data to be expressed in Human MCF7 cells



**Blue: Nucleus
Green: Rab22a**

Lanes : Murin JAWS-II cells Primary Antibody Dilution : 1:1000 Secondary Antibody : Anti-rabbit-FITC Secondary Antibody Dilution : 1:1500 Gene Name : Blue: Nucleus Green: Rab22a Submitted by : RAB22A