

## Product datasheet for **TA344770**

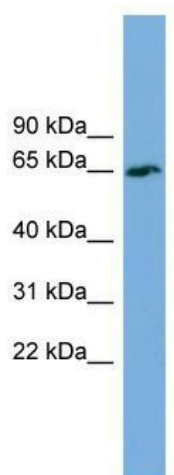
### **TBC1D24 Rabbit Polyclonal Antibody**

#### **Product data:**

Product Type:	Primary Antibodies
Applications:	WB
Recommended Dilution:	WB
Reactivity:	Human
Host:	Rabbit
Isotype:	IgG
Clonality:	Polyclonal
Immunogen:	The immunogen for anti-TBC1D24 antibody: synthetic peptide directed towards the middle region of human TBC1D24. Synthetic peptide located within the following region: SDPADRLSPFLAARHFNLPSKTESMFMAGGSDCLIVGGGGGQALYIDGDL
Formulation:	Liquid. Purified antibody supplied in 1x PBS buffer with 0.09% (w/v) sodium azide and 2% sucrose. <i>Note that this product is shipped as lyophilized powder to China customers.</i>
Purification:	Affinity Purified
Conjugation:	Unconjugated
Storage:	Store at -20°C as received.
Stability:	Stable for 12 months from date of receipt.
Predicted Protein Size:	62 kDa
Gene Name:	TBC1 domain family member 24
Database Link:	<a href="#">NP_065756</a> <a href="#">Entrez Gene 57465 Human</a> <a href="#">Q9ULP9</a>
Background:	TBC1D24 may act as a GTPase-activating protein for Rab family protein(s).
Synonyms:	DFNA65; DFNB86; DOORS; EIEE16; FIME; TLDC6
Note:	Immunogen Sequence Homology: Pig: 100%; Rat: 100%; Horse: 100%; Human: 100%; Mouse: 100%; Guinea pig: 100%; Dog: 93%; Bovine: 93%; Rabbit: 93%



[View online »](#)

**Product images:**


WB Suggested Anti-TBC1D24 Antibody Titration:  
0.2-1 ug/ml; ELISA Titer: 1:1562500; Positive  
Control: Human kidney