

## Product datasheet for **TA344769**

### RIMKLB Rabbit Polyclonal Antibody

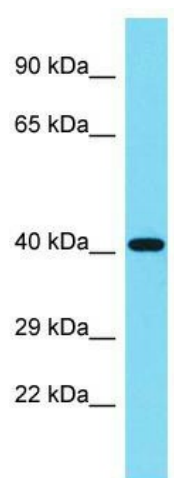
#### Product data:

Product Type:	Primary Antibodies
Applications:	WB
Recommended Dilution:	WB
Reactivity:	Mouse
Host:	Rabbit
Isotype:	IgG
Clonality:	Polyclonal
Immunogen:	The immunogen for Anti-Rimklb antibody is: synthetic peptide directed towards the N-terminal region of Mouse Rimklb. Synthetic peptide located within the following region: FRAVVMDEMVLTV EQGNLGLRISGELISAYPQVVVVRVPTPWVQSDSDIT
Formulation:	Liquid. Purified antibody supplied in 1x PBS buffer with 0.09% (w/v) sodium azide and 2% sucrose. <i>Note that this product is shipped as lyophilized powder to China customers.</i>
Purification:	Affinity Purified
Conjugation:	Unconjugated
Storage:	Store at -20°C as received.
Stability:	Stable for 12 months from date of receipt.
Predicted Protein Size:	42 kDa
Gene Name:	ribosomal modification protein rimK-like family member B
Database Link:	<a href="#">NP_065785</a> <a href="#">Entrez Gene 108653 Mouse</a> <a href="#">Q9ULI2</a>
Background:	Rimklb catalyzes the synthesis of beta-citryl-glutamate and N-acetyl-aspartyl-glutamate. Beta-citryl-glutamate is synthesized more efficiently than N-acetyl-aspartyl-glutamate.
Synonyms:	FAM80B; NAAGS; NAAGS-I
Note:	Immunogen Sequence Homology: Dog: 100%; Pig: 100%; Horse: 100%; Human: 100%; Rabbit: 100%; Rat: 93%; Bovine: 93%; Guinea pig: 93%; Mouse: 86%



[View online »](#)

## Product images:



Host: Rabbit; Target Name: Rimklb; Sample  
Tissue: Mouse Testis lysates; Antibody Dilution:  
1.0 ug/ml