

Product datasheet for **TA344767**

SRGAP1 Rabbit Polyclonal Antibody

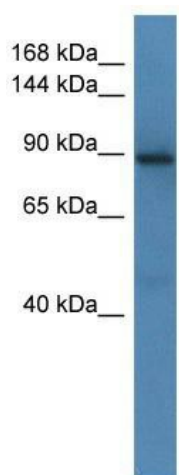
Product data:

Product Type:	Primary Antibodies
Applications:	WB
Recommended Dilution:	WB
Reactivity:	Mouse
Host:	Rabbit
Isotype:	IgG
Clonality:	Polyclonal
Immunogen:	The immunogen for anti-Srgap1 antibody: synthetic peptide corresponding to a region of Mouse. Synthetic peptide located within the following region: DAKELDGPVYEKCMAGGDYCDSPYSEHGTLEEVDQDAGTEPHTSEDECRG
Formulation:	Liquid. Purified antibody supplied in 1x PBS buffer with 0.09% (w/v) sodium azide and 2% sucrose. <i>Note that this product is shipped as lyophilized powder to China customers.</i>
Purification:	Affinity Purified
Conjugation:	Unconjugated
Storage:	Store at -20°C as received.
Stability:	Stable for 12 months from date of receipt.
Predicted Protein Size:	80 kDa
Gene Name:	SLIT-ROBO Rho GTPase activating protein 1
Database Link:	NP_065813 Entrez Gene 117600 Mouse Q7Z6B7
Background:	The function remains unknown.
Synonyms:	ARHGAP13; NMTC2
Note:	Immunogen Sequence Homology: Dog: 100%; Pig: 100%; Rat: 100%; Horse: 100%; Human: 100%; Mouse: 100%; Bovine: 100%; Rabbit: 100%; Guinea pig: 93%; Zebrafish: 79%
Protein Pathways:	Axon guidance



[View online »](#)

Product images:



WB Suggested Anti-Srgap1 Antibody; Titration:
1.0 ug/ml; Positive Control: Mouse Brain