

Product datasheet for **TA344766**

KCTD16 Rabbit Polyclonal Antibody

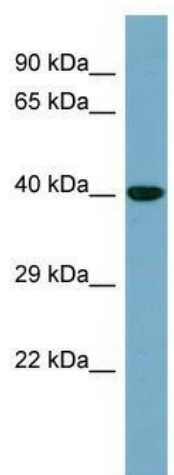
Product data:

Product Type:	Primary Antibodies
Applications:	WB
Recommended Dilution:	WB
Reactivity:	Human
Host:	Rabbit
Isotype:	IgG
Clonality:	Polyclonal
Immunogen:	The immunogen for anti-KCTD16 antibody: synthetic peptide directed towards the N terminal of human KCTD16. Synthetic peptide located within the following region: KRAEYFQLPDLVKLLTPDEIKQSPDEFCHSDFEDASQGS DTRICPPSSL
Formulation:	Liquid. Purified antibody supplied in 1x PBS buffer with 0.09% (w/v) sodium azide and 2% sucrose. <i>Note that this product is shipped as lyophilized powder to China customers.</i>
Purification:	Affinity Purified
Conjugation:	Unconjugated
Storage:	Store at -20°C as received.
Stability:	Stable for 12 months from date of receipt.
Predicted Protein Size:	49 kDa
Gene Name:	potassium channel tetramerization domain containing 16
Database Link:	NP_065819 Entrez Gene 57528 Human Q68DU8
Background:	The function of this protein remains unknown.
Synonyms:	DKFZp781A1155; KIAA1317; MGC138167
Note:	Immunogen Sequence Homology: Rat: 100%; Horse: 100%; Human: 100%; Mouse: 100%; Bovine: 100%; Rabbit: 100%; Dog: 93%; Pig: 79%; Guinea pig: 79%



[View online »](#)

Product images:



WB Suggested Anti-KCTD16 Antibody Titration:
0.2-1 ug/ml; ELISA Titer: 1:1562500; Positive
Control: HepG2 cell lysate