

Product datasheet for TA344762

PDP2 Rabbit Polyclonal Antibody

Product data:

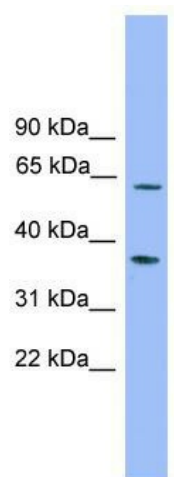
Product Type:	Primary Antibodies
Applications:	WB
Recommended Dilution:	WB
Reactivity:	Human
Host:	Rabbit
Isotype:	IgG
Clonality:	Polyclonal
Immunogen:	The immunogen for anti-PDP2 antibody: synthetic peptide directed towards the middle region of human PDP2. Synthetic peptide located within the following region: LQRSILERGFNTEALNIYQFTPPHYTTPPYLTAEPEVTYHRLRPQDKFLV
Formulation:	Liquid. Purified antibody supplied in 1x PBS buffer with 0.09% (w/v) sodium azide and 2% sucrose. <i>Note that this product is shipped as lyophilized powder to China customers.</i>
Purification:	Affinity Purified
Conjugation:	Unconjugated
Storage:	Store at -20°C as received.
Stability:	Stable for 12 months from date of receipt.
Predicted Protein Size:	60 kDa
Gene Name:	pyruvate dehydrogenase phosphatase catalytic subunit 2
Database Link:	NP_065837 Entrez Gene 57546 Human Q9P2J9
Background:	PDP2 catalyzes the dephosphorylation and concomitant reactivation of the alpha subunit of the E1 component of the pyruvate dehydrogenase complex.
Synonyms:	PDPC 2; PPM2B; PPM2C2
Note:	Immunogen Sequence Homology: Dog: 100%; Human: 100%; Mouse: 100%; Bovine: 100%; Pig: 92%; Rat: 92%; Horse: 92%; Rabbit: 92%; Guinea pig: 92%; Zebrafish: 85%



[View online »](#)

Protein Families: Druggable Genome, Phosphatase

Product images:



WB Suggested Anti-PDP2 Antibody Titration: 0.2-1 ug/ml; ELISA Titer: 1:1562500; Positive Control: Jurkat cell lysate