

Product datasheet for **TA344761**

STAMBPL1 Rabbit Polyclonal Antibody

Product data:

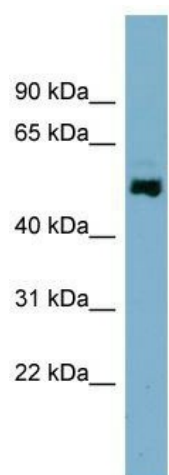
Product Type:	Primary Antibodies
Applications:	WB
Recommended Dilution:	WB
Reactivity:	Human
Host:	Rabbit
Isotype:	IgG
Clonality:	Polyclonal
Immunogen:	The immunogen for anti-STAMBPL1 antibody: synthetic peptide directed towards the N terminal of human STAMBPL1. Synthetic peptide located within the following region: MDQPFTVNSLKKLAAMPDHTDVLSPEERVRLSKLGCNITISEDITPRR
Formulation:	Liquid. Purified antibody supplied in 1x PBS buffer with 0.09% (w/v) sodium azide and 2% sucrose. <i>Note that this product is shipped as lyophilized powder to China customers.</i>
Purification:	Affinity Purified
Conjugation:	Unconjugated
Storage:	Store at -20°C as received.
Stability:	Stable for 12 months from date of receipt.
Predicted Protein Size:	50 kDa
Gene Name:	STAM binding protein like 1
Database Link:	NP_065850 Entrez Gene 57559 Human Q96FJ0
Background:	STAMBPL1 is a zinc metalloprotease that specifically cleaves 'Lys-63'-linked polyubiquitin chains. STAMBPL1 does not cleave 'Lys-48'-linked polyubiquitin chains.
Synonyms:	ALMalpha; AMSH-FP; AMSH-LP; bA399O19.2
Note:	Immunogen Sequence Homology: Dog: 100%; Pig: 100%; Rat: 100%; Horse: 100%; Human: 100%; Mouse: 100%; Rabbit: 100%; Guinea pig: 100%; Bovine: 93%; Zebrafish: 93%



[View online »](#)

Protein Families: Druggable Genome, Protease

Product images:



WB Suggested Anti-STAMBPL1 Antibody Titration:
0.2-1 ug/ml; ELISA Titer: 1:1562500; Positive
Control: Jurkat cell lysate