

Product datasheet for TA344760

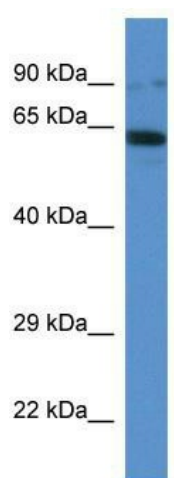
IFT80 Rabbit Polyclonal Antibody

Product data:

Product Type:	Primary Antibodies
Applications:	WB
Recommended Dilution:	WB
Reactivity:	Mouse
Host:	Rabbit
Isotype:	IgG
Clonality:	Polyclonal
Immunogen:	The immunogen for anti-Ift80 antibody: synthetic peptide corresponding to a region of Mouse. Synthetic peptide located within the following region: PNTIYVDRDILPKTLYERDASEYSKNPHIVSFVGNQVTIRRADGSLVHIS
Formulation:	Liquid. Purified antibody supplied in 1x PBS buffer with 0.09% (w/v) sodium azide and 2% sucrose.
Purification:	Affinity Purified
Conjugation:	Unconjugated
Storage:	Store at -20°C as received.
Stability:	Stable for 12 months from date of receipt.
Predicted Protein Size:	85 kDa
Gene Name:	intraflagellar transport 80
Database Link:	NP_065851 Entrez Gene 68259 Mouse Q9P2H3
Background:	Ift80 is a component of the intraflagellar transport (IFT) complex B, which is essential for the development and maintenance of motile and sensory cilia.
Synonyms:	ATD2; SRTD2; WDR56
Note:	Immunogen Sequence Homology: Dog: 100%; Pig: 100%; Rat: 100%; Human: 100%; Mouse: 100%; Bovine: 100%; Horse: 93%; Rabbit: 93%


[View online »](#)

Product images:



WB Suggested Anti-Ift80 Antibody; Titration: 1.0 ug/ml; Positive Control: Mouse Spleen