

Product datasheet for **TA344759**

ARHGAP20 Rabbit Polyclonal Antibody

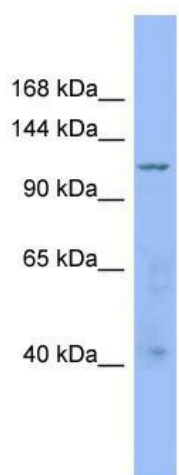
Product data:

Product Type:	Primary Antibodies
Applications:	WB
Recommended Dilution:	WB
Reactivity:	Human
Host:	Rabbit
Isotype:	IgG
Clonality:	Polyclonal
Immunogen:	The immunogen for anti-ARHGAP20 antibody: synthetic peptide directed towards the middle region of human ARHGAP20. Synthetic peptide located within the following region: YSSLSPGTSPSGSSVSSQDSAFSQISEHSVFPTETSSPIDCTFQAQRK
Formulation:	Liquid. Purified antibody supplied in 1x PBS buffer with 0.09% (w/v) sodium azide and 2% sucrose. <i>Note that this product is shipped as lyophilized powder to China customers.</i>
Purification:	Affinity Purified
Conjugation:	Unconjugated
Storage:	Store at -20°C as received.
Stability:	Stable for 12 months from date of receipt.
Predicted Protein Size:	132 kDa
Gene Name:	Rho GTPase activating protein 20
Database Link:	NP_065860 Entrez Gene 57569 Human Q9P2F6
Background:	ARHGAP20 is an GTPase activator for the Rho-type GTPases by converting them to an inactive GDP-bound state.
Synonyms:	RARHOGAP
Note:	Immunogen Sequence Homology: Dog: 100%; Pig: 100%; Rat: 100%; Horse: 100%; Human: 100%; Mouse: 100%; Bovine: 100%; Rabbit: 100%; Guinea pig: 100%



[View online »](#)

Product images:



WB Suggested Anti-ARHGAP20 Antibody Titration:
0.2-1 ug/ml; ELISA Titer: 1:1562500; Positive
Control: 721_B cell lysate