

## Product datasheet for **TA344757**

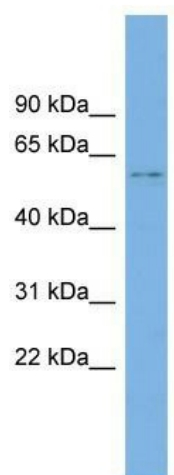
### KIAA1430 (CFAP97) Rabbit Polyclonal Antibody

#### Product data:

Product Type:	Primary Antibodies
Applications:	WB
Recommended Dilution:	WB
Reactivity:	Human
Host:	Rabbit
Isotype:	IgG
Clonality:	Polyclonal
Immunogen:	The immunogen for anti-KIAA1430 antibody: synthetic peptide directed towards the middle region of human KIAA1430. Synthetic peptide located within the following region: NMGYLNSSPLSRRARSTLGQYSPLRASRTSSATSGLSCRSESAVDPSSG
Formulation:	Liquid. Purified antibody supplied in 1x PBS buffer with 0.09% (w/v) sodium azide and 2% sucrose. <i>Note that this product is shipped as lyophilized powder to China customers.</i>
Purification:	Affinity Purified
Conjugation:	Unconjugated
Storage:	Store at -20°C as received.
Stability:	Stable for 12 months from date of receipt.
Predicted Protein Size:	59 kDa
Gene Name:	cilia and flagella associated protein 97
Database Link:	<a href="#">NP_065878</a> <a href="#">Entrez Gene 57587 Human</a> <a href="#">Q9P2B7</a>
Background:	The function of this protein remains unknown.
Synonyms:	hmw; KIAA1430
Note:	Immunogen Sequence Homology: Horse: 100%; Human: 100%; Dog: 93%; Pig: 93%; Rat: 93%; Rabbit: 93%; Guinea pig: 93%; Mouse: 87%; Bovine: 80%



[View online »](#)

**Product images:**

WB Suggested Anti-KIAA1430 Antibody Titration:  
0.2-1 ug/ml; Positive Control: PANC1 cell lysate