

Product datasheet for **TA344756**

FENS1 (WDFY1) Rabbit Polyclonal Antibody

Product data:

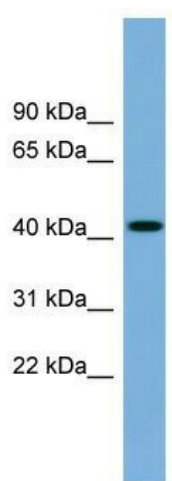
Product Type:	Primary Antibodies
Applications:	WB
Recommended Dilution:	WB
Reactivity:	Human
Host:	Rabbit
Isotype:	IgG
Clonality:	Polyclonal
Immunogen:	The immunogen for anti-WDFY1 antibody: synthetic peptide directed towards the N terminal of human WDFY1. Synthetic peptide located within the following region: MAAEIHSRPQSSRPVLLSKIEGHQDAVTAALLIPKEDGVITASEDRTIRV
Formulation:	Liquid. Purified antibody supplied in 1x PBS buffer with 0.09% (w/v) sodium azide and 2% sucrose. <i>Note that this product is shipped as lyophilized powder to China customers.</i>
Purification:	Affinity Purified
Conjugation:	Unconjugated
Storage:	Store at -20°C as received.
Stability:	Stable for 12 months from date of receipt.
Predicted Protein Size:	46 kDa
Gene Name:	WD repeat and FYVE domain containing 1
Database Link:	NP_065881 Entrez Gene 57590 Human Q8IWB7
Background:	The FYVE domain mediates the recruitment of proteins involved in membrane trafficking and cell signaling to phosphatidylinositol 3-phosphate (PtdIns(3)P)-containing membranes. This gene encodes a protein which contains a single FYVE domain and multiple WD40 repeats. This protein is localized to endosomes.
Synonyms:	FENS-1; WDF1; ZFYVE17



[View online »](#)

Note: Immunogen Sequence Homology: Pig: 100%; Rat: 100%; Human: 100%; Mouse: 100%; Bovine: 100%; Rabbit: 100%; Zebrafish: 100%; Guinea pig: 100%; Horse: 86%

Product images:



WB Suggested Anti-WDFY1 Antibody Titration:
0.2-1 ug/ml; ELISA Titer: 1:62500; Positive Control:
721_B cell lysate