

Product datasheet for **TA344755**

CCDC146 Rabbit Polyclonal Antibody

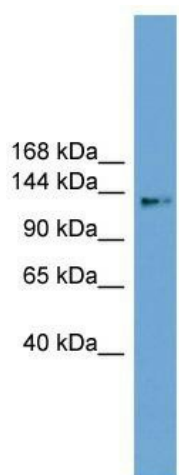
Product data:

Product Type:	Primary Antibodies
Applications:	WB
Recommended Dilution:	WB
Reactivity:	Human
Host:	Rabbit
Isotype:	IgG
Clonality:	Polyclonal
Immunogen:	The immunogen for anti-CCDC146 antibody: synthetic peptide directed towards the middle region of human CCDC146. Synthetic peptide located within the following region: KEIEKEWLKVLRLDEEMHALAIAEKSQEFLEADNRQLPNGVYTAEQRPNA
Formulation:	Liquid. Purified antibody supplied in 1x PBS buffer with 0.09% (w/v) sodium azide and 2% sucrose. <i>Note that this product is shipped as lyophilized powder to China customers.</i>
Purification:	Affinity Purified
Conjugation:	Unconjugated
Storage:	Store at -20°C as received.
Stability:	Stable for 12 months from date of receipt.
Predicted Protein Size:	113 kDa
Gene Name:	coiled-coil domain containing 146
Database Link:	NP_065930 Entrez Gene 57639 Human Q8IYE0
Background:	The function of this protein remains unknown.
Synonyms:	KIAA1505
Note:	Immunogen Sequence Homology: Human: 100%; Horse: 93%; Pig: 86%; Guinea pig: 86%; Dog: 79%; Rat: 79%; Bovine: 79%



[View online »](#)

Product images:



WB Suggested Anti-CCDC146 Antibody Titration:
0.2-1 ug/ml; Positive Control: 721_B cell lysate