

Product datasheet for **TA344752**

KIAA1576 (VAT1L) Rabbit Polyclonal Antibody

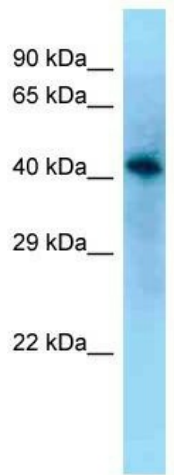
Product data:

Product Type:	Primary Antibodies
Applications:	WB
Recommended Dilution:	WB
Reactivity:	Mouse, Human
Host:	Rabbit
Isotype:	IgG
Clonality:	Polyclonal
Immunogen:	The immunogen for Anti-Vat1l antibody is: synthetic peptide directed towards the N-terminal region of Vat1l. Synthetic peptide located within the following region: FIDLMVRQGNIDNPPKTPLVPGFECSGIVEALGDSVKGYEIGDRVMAFVN
Formulation:	Liquid. Purified antibody supplied in 1x PBS buffer with 0.09% (w/v) sodium azide and 2% sucrose.
Purification:	Affinity Purified
Conjugation:	Unconjugated
Storage:	Store at -20°C as received.
Stability:	Stable for 12 months from date of receipt.
Predicted Protein Size:	46 kDa
Gene Name:	vesicle amine transport 1-like
Database Link:	NP_065978 Entrez Gene 270097 MouseEntrez Gene 57687 Human Q9HCJ6
Background:	The function of this protein remains unknown.
Synonyms:	KIAA1576
Note:	Immunogen Sequence Homology: Dog: 100%; Pig: 100%; Rat: 100%; Horse: 100%; Human: 100%; Mouse: 100%; Rabbit: 100%; Zebrafish: 100%; Guinea pig: 100%; Bovine: 93%
Protein Families:	Druggable Genome

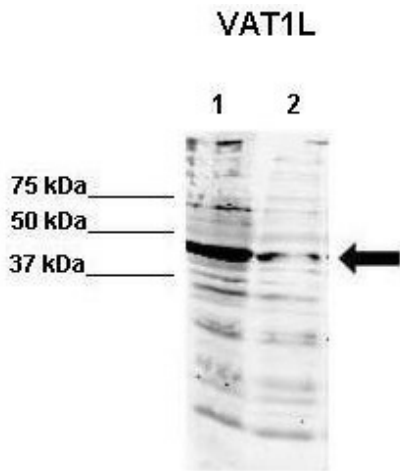


[View online »](#)

Product images:



WB Suggested Anti-Vat1l Antibody; Titration: 1.0 ug/ml; Positive Control: Mouse Kidney



WB Suggested Anti-Vat1l Antibody ; Positive Control: Lane 1: 60ug human NT2 cell line Lane 2: 80ug mouse brain extract; Primary Antibody Dilution : 1:500; Secondary Antibody : IRDye 800 CW goat anti-rabbit from Li-COR Bioscience; Secondary Antibody Dilutio