

Product datasheet for **TA344751**

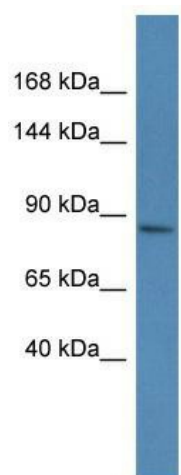
MAGED4B Rabbit Polyclonal Antibody

Product data:

Product Type:	Primary Antibodies
Applications:	WB
Recommended Dilution:	WB
Reactivity:	Mouse
Host:	Rabbit
Isotype:	IgG
Clonality:	Polyclonal
Immunogen:	The immunogen for anti-Magee1 antibody: synthetic peptide corresponding to a region of Mouse. Synthetic peptide located within the following region: GRECTKVFPDLLNRAARTLNHVGTELVLDPNRNHSYTLYNRREMEDTEE
Formulation:	Liquid. Purified antibody supplied in 1x PBS buffer with 0.09% (w/v) sodium azide and 2% sucrose.
Purification:	Affinity Purified
Conjugation:	Unconjugated
Storage:	Store at -20°C as received.
Stability:	Stable for 12 months from date of receipt.
Predicted Protein Size:	80 kDa
Gene Name:	MAGE family member D4B
Database Link:	NP_110428 Entrez Gene 81557 Human Q96JG8
Background:	The function remains unknown.
Synonyms:	KIAA1859; MGC3210; MGC88639
Note:	Immunogen Sequence Homology: Pig: 100%; Rat: 100%; Human: 100%; Mouse: 100%; Guinea pig: 100%



[View online »](#)

Product images:


WB Suggested Anti-Magee1 Antibody; Titration:
1.0 ug/ml; Positive Control: Mouse Spleen