

## Product datasheet for **TA344749**

### CPNE5 Rabbit Polyclonal Antibody

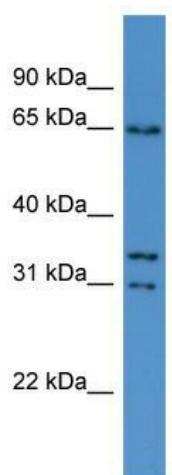
#### Product data:

Product Type:	Primary Antibodies
Applications:	WB
Recommended Dilution:	WB
Reactivity:	Mouse
Host:	Rabbit
Isotype:	IgG
Clonality:	Polyclonal
Immunogen:	The immunogen for anti-Cpne5 antibody: synthetic peptide corresponding to a region of Mouse. Synthetic peptide located within the following region: SLSEFDSLAGSIPATKVEITVSCRNLLDKDMFSKSDPLCVMYTGGMENKQ
Formulation:	Liquid. Purified antibody supplied in 1x PBS buffer with 0.09% (w/v) sodium azide and 2% sucrose.
Purification:	Affinity Purified
Conjugation:	Unconjugated
Storage:	Store at -20°C as received.
Stability:	Stable for 12 months from date of receipt.
Predicted Protein Size:	65 kDa
Gene Name:	copine 5
Database Link:	<a href="#">NP_065990</a> <a href="#">Entrez Gene 240058 Mouse</a> <a href="#">Q9HCH3</a>
Background:	Calcium-dependent membrane-binding proteins may regulate molecular events at the interface of the cell membrane and cytoplasm. This gene is one of several genes that encodes a calcium-dependent protein containing two N-terminal type II C2 domains and an integrin A domain-like sequence in the C-terminus.
Synonyms:	COPN5; CPN5
Note:	Immunogen Sequence Homology: Dog: 100%; Pig: 100%; Rat: 100%; Human: 100%; Mouse: 100%; Bovine: 100%; Rabbit: 100%; Zebrafish: 77%



[View online »](#)

## Product images:



WB Suggested Anti-Cpne5 Antibody Titration: 0.2-1 ug/ml; ELISA Titer: 1:312500; Positive Control: Mouse Brain