

## Product datasheet for **TA344748**

### FHIP2A Rabbit Polyclonal Antibody

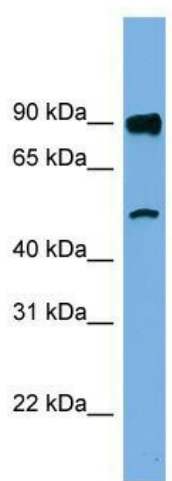
#### Product data:

<b>Product Type:</b>	Primary Antibodies
<b>Applications:</b>	WB
<b>Recommended Dilution:</b>	WB
<b>Reactivity:</b>	Human
<b>Host:</b>	Rabbit
<b>Isotype:</b>	IgG
<b>Clonality:</b>	Polyclonal
<b>Immunogen:</b>	The immunogen for anti-FAM160B1 antibody: synthetic peptide directed towards the N terminal of human FAM160B1. Synthetic peptide located within the following region: HYYIETSDDKAPVTDNIPSHLEQMLDILVQEENERESGETGPCMEYLLH
<b>Formulation:</b>	Liquid. Purified antibody supplied in 1x PBS buffer with 0.09% (w/v) sodium azide and 2% sucrose.
<b>Purification:</b>	Affinity Purified
<b>Conjugation:</b>	Unconjugated
<b>Storage:</b>	Store at -20°C as received.
<b>Stability:</b>	Stable for 12 months from date of receipt.
<b>Predicted Protein Size:</b>	86 kDa
<b>Gene Name:</b>	family with sequence similarity 160 member B1
<b>Database Link:</b>	<a href="#">NP_065991</a> <a href="#">Entrez Gene 57700 Human</a> <a href="#">Q5W0V3</a>
<b>Background:</b>	The function of this protein remains unknown.
<b>Synonyms:</b>	bA106M7.3; KIAA1600



**Note:** Immunogen Sequence Homology: Dog: 100%; Pig: 100%; Rat: 100%; Horse: 100%; Human: 100%; Mouse: 100%; Bovine: 100%; Rabbit: 100%; Zebrafish: 100%; Guinea pig: 100%

**Product images:**



WB Suggested Anti-FAM160B1 Antibody  
Titration: 0.2-1 ug/ml; Positive Control: Jurkat  
cell lysate