

Product datasheet for **TA344747**

DENND1A Rabbit Polyclonal Antibody

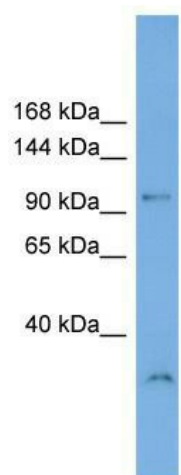
Product data:

Product Type:	Primary Antibodies
Applications:	WB
Recommended Dilution:	WB
Reactivity:	Human
Host:	Rabbit
Isotype:	IgG
Clonality:	Polyclonal
Immunogen:	The immunogen for anti-DENND1A antibody: synthetic peptide directed towards the N terminal of human DENND1A. Synthetic peptide located within the following region: PGVSVHLSVHSYFTVPDTRELPSIPENRNLTEYFVAVDVNNMLHLYASML
Formulation:	Liquid. Purified antibody supplied in 1x PBS buffer with 0.09% (w/v) sodium azide and 2% sucrose. <i>Note that this product is shipped as lyophilized powder to China customers.</i>
Purification:	Affinity Purified
Conjugation:	Unconjugated
Storage:	Store at -20°C as received.
Stability:	Stable for 12 months from date of receipt.
Predicted Protein Size:	110 kDa
Gene Name:	DENN domain containing 1A
Database Link:	NP_065997 Entrez Gene 57706 Human Q8TEH3
Background:	DENND1A may be involved in the clathrin-mediated endocytosis of synaptic vesicles.
Synonyms:	FAM31A; KIAA1608
Note:	Immunogen Sequence Homology: Dog: 100%; Pig: 100%; Rat: 100%; Human: 100%; Bovine: 100%; Rabbit: 100%; Guinea pig: 100%; Mouse: 93%; Zebrafish: 93%; Horse: 80%



[View online »](#)

Product images:



WB Suggested Anti-DENND1A Antibody Titration:
0.2-1 ug/ml; Positive Control: Human Muscle