

Product datasheet for **TA344745**

MEAK7 (TLDC1) Rabbit Polyclonal Antibody

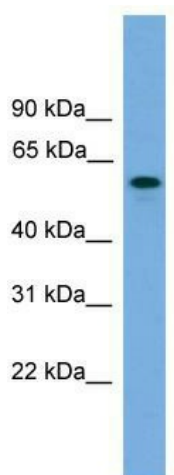
Product data:

Product Type:	Primary Antibodies
Applications:	WB
Recommended Dilution:	WB
Reactivity:	Human
Host:	Rabbit
Isotype:	IgG
Clonality:	Polyclonal
Immunogen:	The immunogen for anti-KIAA1609 antibody: synthetic peptide directed towards the middle region of human KIAA1609. Synthetic peptide located within the following region: LSAQENFQFDKMEVWAVGDPSEEQLAKGNKSILDADPEAQALLEISGHSR
Formulation:	Liquid. Purified antibody supplied in 1x PBS buffer with 0.09% (w/v) sodium azide and 2% sucrose. <i>Note that this product is shipped as lyophilized powder to China customers.</i>
Purification:	Affinity Purified
Conjugation:	Unconjugated
Storage:	Store at -20°C as received.
Stability:	Stable for 12 months from date of receipt.
Predicted Protein Size:	51 kDa
Gene Name:	TBC/LysM-associated domain containing 1
Database Link:	NP_065998 Entrez Gene 57707 Human Q6P9B6
Background:	The function of KIAA1609 remains unknown.
Synonyms:	KIAA1609
Note:	Immunogen Sequence Homology: Human: 100%



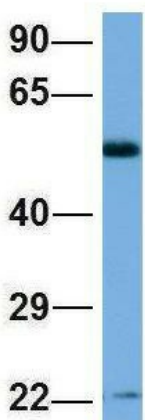
[View online »](#)

Product images:



WB Suggested Anti-KIAA1609 Antibody Titration:
0.2-1 ug/ml; ELISA Titer: 1:1562500; Positive
Control: Transfected 293T

KIAA1609



Rabbit Anti-KIAA1609
Sample Type: Human Fetal Brain
Antibody Concentration: 1ug/mL

Host: Rabbit; Target Name: KIAA1609; Sample
Tissue: Human Fetal Brain; Antibody Dilution: 1.0
ug/ml