

Product datasheet for **TA344744**

Bcl 7A (BCL7A) Rabbit Polyclonal Antibody

Product data:

Product Type:	Primary Antibodies
Applications:	WB
Recommended Dilution:	WB
Reactivity:	Human
Host:	Rabbit
Isotype:	IgG
Clonality:	Polyclonal
Immunogen:	The immunogen for anti-BCL7A antibody: synthetic peptide directed towards the middle region of human BCL7A. Synthetic peptide located within the following region: CGSEVTTPENSSSPGMMDMHDDNSNQSSIADASPIKQENSSNSSPAPEPN
Formulation:	Liquid. Purified antibody supplied in 1x PBS buffer with 0.09% (w/v) sodium azide and 2% sucrose. <i>Note that this product is shipped as lyophilized powder to China customers.</i>
Purification:	Affinity Purified
Conjugation:	Unconjugated
Storage:	Store at -20°C as received.
Stability:	Stable for 12 months from date of receipt.
Predicted Protein Size:	25 kDa
Gene Name:	B-cell CLL/lymphoma 7A
Database Link:	NP_066273 Entrez Gene 605 Human Q4VC05
Background:	This gene is directly involved, with Myc and IgH, in a three-way gene translocation in a Burkitt lymphoma cell line. As a result of the gene translocation, the N-terminal region of the gene product is disrupted, which is thought to be related to the pathogenesis of a subset of high-grade B cell non-Hodgkin lymphoma. The N-terminal segment involved in the translocation includes the region that shares a strong sequence similarity with those of BCL7B and BCL7C. Two transcript variants encoding different isoforms have been found for this gene.



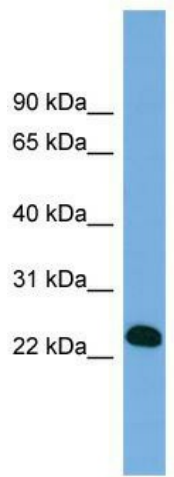
[View online »](#)

Synonyms: BCL7

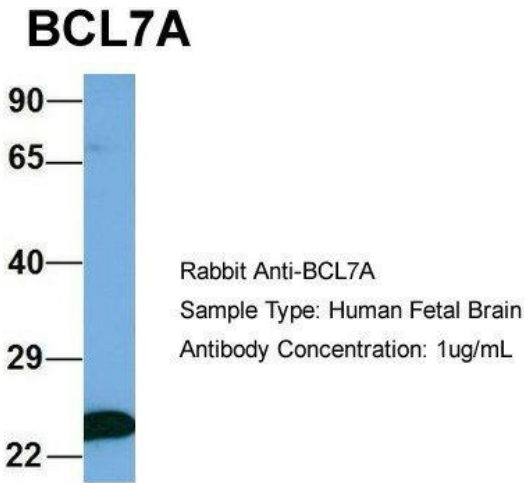
Note: Immunogen Sequence Homology: Dog: 100%; Pig: 100%; Rat: 100%; Horse: 100%; Human: 100%; Mouse: 100%; Bovine: 100%; Rabbit: 100%; Guinea pig: 86%; Zebrafish: 77%

Protein Families: Druggable Genome

Product images:

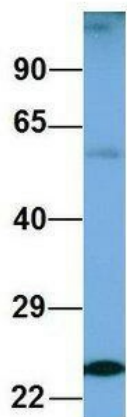


WB Suggested Anti-BCL7A Antibody Titration: 0.2-1 ug/ml; ELISA Titer: 1:1562500; Positive Control: Human Lung



Host: Rabbit; Target Name: BCL7A; Sample Tissue: Human Fetal Brain; Antibody Dilution: 1.0 ug/ml

BCL7A



Rabbit Anti-BCL7A
Sample Type: Human Fetal Heart
Antibody Concentration: 1ug/mL

Host: Rabbit; Target Name: BCL7A; Sample Tissue: Human Fetal Heart; Antibody Dilution: 1.0 ug/ml