

Product datasheet for **TA344740**

Scramblase 1 (PLSCR1) Rabbit Polyclonal Antibody

Product data:

Product Type:	Primary Antibodies
Applications:	WB
Recommended Dilution:	WB
Reactivity:	Human
Host:	Rabbit
Isotype:	IgG
Clonality:	Polyclonal
Immunogen:	The immunogen for anti-PLSCR1 antibody: synthetic peptide directed towards the N terminal of human PLSCR1. Synthetic peptide located within the following region: MDKQNSQMNASHPETNLPVGYPPQYPPTAFQGPPGYSYGPQPVSYPPPP
Formulation:	Liquid. Purified antibody supplied in 1x PBS buffer with 0.09% (w/v) sodium azide and 2% sucrose. <i>Note that this product is shipped as lyophilized powder to China customers.</i>
Purification:	Affinity Purified
Conjugation:	Unconjugated
Storage:	Store at -20°C as received.
Stability:	Stable for 12 months from date of receipt.
Predicted Protein Size:	35 kDa
Gene Name:	phospholipid scramblase 1
Database Link:	NP_066928 Entrez Gene 5359 Human O15162
Background:	PLSCR1 may mediate accelerated ATP-independent bidirectional transbilayer migration of phospholipids upon binding calcium ions that results in a loss of phospholipid asymmetry in the plasma membrane. PLSCR1 may play a central role in the initiation of fibrin clot formation, in the activation of mast cells and in the recognition of apoptotic and injured cells by the reticuloendothelial system.
Synonyms:	MMTRA1B

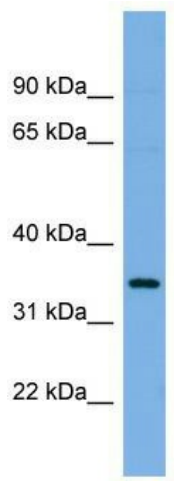


[View online »](#)

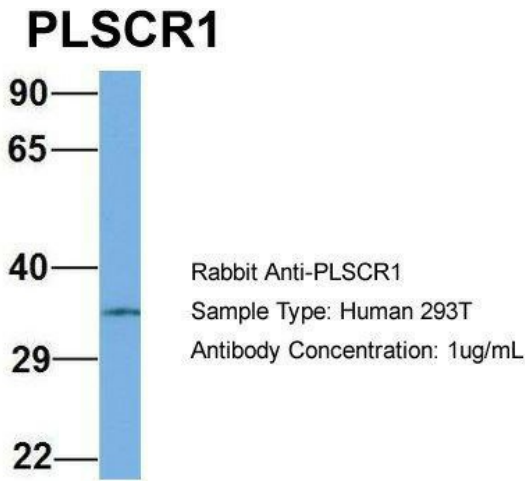
Note: Immunogen Sequence Homology: Human: 100%

Protein Families: Druggable Genome, Stem cell - Pluripotency

Product images:

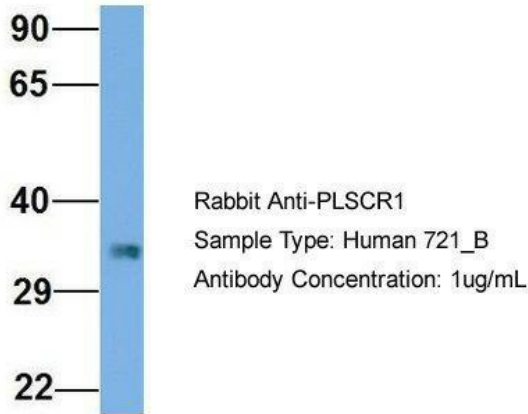


WB Suggested Anti-PLSCR1 Antibody Titration: 0.2-1 ug/ml; ELISA Titer: 1:1562500; Positive Control: Hela cell lysate



Host: Rabbit; Target Name: PLSCR1; Sample Tissue: Human 293T; Antibody Dilution: 1.0 ug/ml; PLSCR1 is strongly supported by BioGPS gene expression data to be expressed in Human HEK293T cells

PLSCR1



Host: Rabbit; Target Name: PLSCR1; Sample Tissue: Human 721_B; Antibody Dilution: 1.0 ug/ml; PLSCR1 is supported by BioGPS gene expression data to be expressed in 721_B