

Product datasheet for **TA344736**

TRIB3 Rabbit Polyclonal Antibody

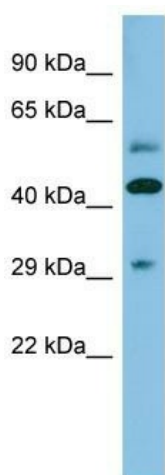
Product data:

Product Type:	Primary Antibodies
Applications:	WB
Recommended Dilution:	WB
Reactivity:	Human
Host:	Rabbit
Isotype:	IgG
Clonality:	Polyclonal
Immunogen:	The immunogen for Anti-TRIB3 antibody is: synthetic peptide directed towards the N-terminal region of Human TRIB3. Synthetic peptide located within the following region: KNNRMSANNDHFLTPTWQQMRATPLAAPAGLSRKKRLELDDNLDTERPV
Formulation:	Liquid. Purified antibody supplied in 1x PBS buffer with 0.09% (w/v) sodium azide and 2% sucrose. <i>Note that this product is shipped as lyophilized powder to China customers.</i>
Purification:	Affinity Purified
Conjugation:	Unconjugated
Storage:	Store at -20°C as received.
Stability:	Stable for 12 months from date of receipt.
Predicted Protein Size:	42 kDa
Gene Name:	tribbles pseudokinase 3
Database Link:	NP_066981 Entrez Gene 57761 Human Q96RU7
Background:	The function of this protein remains unknown.
Synonyms:	C20orf97; NIPK; SINK; SKIP3; TRB3
Note:	Immunogen Sequence Homology: Human: 100%; Pig: 91%; Sheep: 91%; Bovine: 91%
Protein Families:	Druggable Genome, Protein Kinase, Transcription Factors



[View online »](#)

Product images:



Host: Rabbit
Target Name: TRIB3
Sample Tissue: Fetal Kidney Lysate
Antibody Dilution: 1.0 μ g/ml

Host: Rabbit; Target Name: TRIB3; Sample Tissue:
Fetal Kidney lysates; Antibody Dilution: 1.0 ug/ml