

## Product datasheet for **TA344735**

### TRIB3 Rabbit Polyclonal Antibody

#### Product data:

Product Type:	Primary Antibodies
Applications:	WB
Recommended Dilution:	WB
Reactivity:	Human
Host:	Rabbit
Isotype:	IgG
Clonality:	Polyclonal
Immunogen:	The immunogen for anti-TRIB3 antibody: synthetic peptide directed towards the N terminal of human TRIB3. Synthetic peptide located within the following region: YVLLPEEGGRAYQALHCPTGTGEYTCVKVYPVQEALAVLEPYARLPPHKHV
Formulation:	Liquid. Purified antibody supplied in 1x PBS buffer with 0.09% (w/v) sodium azide and 2% sucrose. <i>Note that this product is shipped as lyophilized powder to China customers.</i>
Purification:	Affinity Purified
Conjugation:	Unconjugated
Storage:	Store at -20°C as received.
Stability:	Stable for 12 months from date of receipt.
Predicted Protein Size:	39 kDa
Gene Name:	tribbles pseudokinase 3
Database Link:	<a href="#">NP_066981</a> <a href="#">Entrez Gene 57761 Human</a> <a href="#">Q96RU7</a>
Background:	The protein encoded by this gene is a putative protein kinase that is induced by the transcription factor NF-kappaB. The encoded protein is a negative regulator of NF-kappaB and can also sensitize cells to TNF- and TRAIL-induced apoptosis. In addition, this protein can negatively regulate the cell survival serine-threonine kinase AKT1.
Synonyms:	C20orf97; NIPK; SINK; SKIP3; TRB3

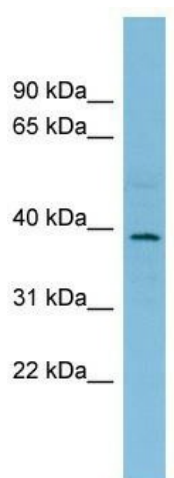


[View online »](#)

**Note:** Immunogen Sequence Homology: Human: 100%; Dog: 93%; Pig: 86%; Rabbit: 86%; Guinea pig: 86%; Rat: 79%; Sheep: 79%; Bovine: 79%

**Protein Families:** Druggable Genome, Protein Kinase, Transcription Factors

**Product images:**



WB Suggested Anti-TRIB3 Antibody Titration: 0.2-1 ug/ml; ELISA Titer: 1:62500; Positive Control: ACHN cell lysate