

## Product datasheet for **TA344734**

### **RAB40C Rabbit Polyclonal Antibody**

#### **Product data:**

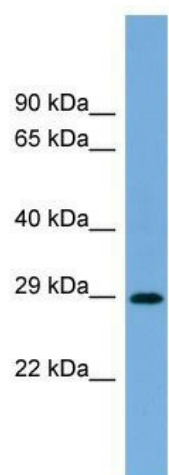
<b>Product Type:</b>	Primary Antibodies
<b>Applications:</b>	WB
<b>Recommended Dilution:</b>	WB
<b>Reactivity:</b>	Human
<b>Host:</b>	Rabbit
<b>Isotype:</b>	IgG
<b>Clonality:</b>	Polyclonal
<b>Immunogen:</b>	The immunogen for anti-RAB40C antibody: synthetic peptide directed towards the N terminal of human RAB40C. Synthetic peptide located within the following region: QDGAAESPYAYSNGIDYKTTTILLDGRVRLELWDTSGQGRFCTIFRSYS
<b>Formulation:</b>	Liquid. Purified antibody supplied in 1x PBS buffer with 0.09% (w/v) sodium azide and 2% sucrose.
<b>Purification:</b>	Affinity Purified
<b>Conjugation:</b>	Unconjugated
<b>Storage:</b>	Store at -20°C as received.
<b>Stability:</b>	Stable for 12 months from date of receipt.
<b>Predicted Protein Size:</b>	31 kDa
<b>Gene Name:</b>	RAB40C, member RAS oncogene family
<b>Database Link:</b>	<a href="#">NP_066991</a> <a href="#">Entrez Gene 57799 Human</a> <a href="#">Q96S21</a>
<b>Background:</b>	RAB40C is a probable substrate-recognition component of a SCF-like ECS (Elongin-Cullin-SOCS-box protein) E3 ubiquitin ligase complex which mediates the ubiquitination and subsequent proteasomal degradation of target proteins.
<b>Synonyms:</b>	RARL; RASL8C
<b>Note:</b>	Immunogen Sequence Homology: Rat: 100%; Goat: 100%; Horse: 100%; Human: 100%; Mouse: 100%; Bovine: 100%; Pig: 93%; Zebrafish: 93%; Guinea pig: 93%



[View online »](#)

Protein Families: Druggable Genome

### Product images:



WB Suggested Anti-RAB40C Antibody Titration:  
0.2-1 ug/ml; Positive Control: Human Muscle