

Product datasheet for **TA344733**

RAB40C Rabbit Polyclonal Antibody

Product data:

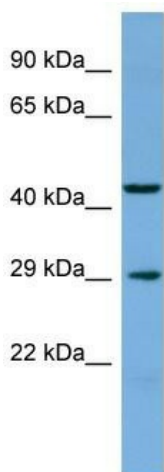
Product Type:	Primary Antibodies
Applications:	WB
Recommended Dilution:	WB
Reactivity:	Human
Host:	Rabbit
Isotype:	IgG
Clonality:	Polyclonal
Immunogen:	The immunogen for Anti-RAB40C antibody is: synthetic peptide directed towards the C-terminal region of Human RAB40C. Synthetic peptide located within the following region: MANGMNAVMMHGRSYSLASGAGGGGSKGNLSLKRKSKIRPPQSPQNCRSR
Formulation:	Liquid. Purified antibody supplied in 1x PBS buffer with 0.09% (w/v) sodium azide and 2% sucrose.
Purification:	Affinity Purified
Conjugation:	Unconjugated
Storage:	Store at -20°C as received.
Stability:	Stable for 12 months from date of receipt.
Predicted Protein Size:	30 kDa
Gene Name:	RAB40C, member RAS oncogene family
Database Link:	NP_066991 Entrez Gene 57799 Human Q96S21
Background:	RAB40C is a probable substrate-recognition component of a SCF-like ECS (Elongin-Cullin-SOCS-box protein) E3 ubiquitin ligase complex which mediates the ubiquitination and subsequent proteasomal degradation of target proteins.
Synonyms:	RARL; RASL8C
Note:	Immunogen Sequence Homology: Pig: 100%; Rat: 100%; Goat: 100%; Horse: 100%; Human: 100%; Mouse: 100%; Bovine: 100%; Zebrafish: 100%; Guinea pig: 100%



[View online »](#)

Protein Families: Druggable Genome

Product images:



Host: Rabbit
Target Name: RAB40C
Sample Tissue: Fetal Muscle Lysate
Antibody Dilution: 1.0 μ g/ml

Host: Rabbit; Target Name: RAB40C; Sample Tissue: Fetal Muscle lysates; Antibody Dilution: 1.0 ug/ml