

## Product datasheet for **TA344731**

### WFDC1 Rabbit Polyclonal Antibody

#### Product data:

Product Type:	Primary Antibodies
Applications:	WB
Recommended Dilution:	WB
Reactivity:	Human
Host:	Rabbit
Isotype:	IgG
Clonality:	Polyclonal
Immunogen:	The immunogen for anti-WFDC1 antibody: synthetic peptide directed towards the middle region of human WFDC1. Synthetic peptide located within the following region: VAEGIPNRGQCVKQRRQADGRILRHKLYKEYPEGDSKNVAEPGRGQQKHF
Formulation:	Liquid. Purified antibody supplied in 1x PBS buffer with 0.09% (w/v) sodium azide and 2% sucrose. <i>Note that this product is shipped as lyophilized powder to China customers.</i>
Purification:	Affinity Purified
Conjugation:	Unconjugated
Storage:	Store at -20°C as received.
Stability:	Stable for 12 months from date of receipt.
Predicted Protein Size:	21 kDa
Gene Name:	WAP four-disulfide core domain 1
Database Link:	<a href="#">NP_067020</a> <a href="#">Entrez Gene 58189 Human</a> <a href="#">Q9HC57</a>



[View online »](#)

**Background:**

This gene encodes a member of the WAP-type four disulfide core domain family. The WAP-type four-disulfide core domain, or WAP signature motif, contains eight cysteines forming four disulfide bonds at the core of the protein, and functions as a protease inhibitor in many family members. The encoded protein shares 81% amino acid identity with the rat ps20 protein, which was originally identified as a secreted growth inhibitor. This gene is mapped to chromosome 16q24, an area of frequent loss of heterozygosity in cancers, including prostate, breast and hepatocellular cancers and Wilms' tumor. Owing to its location and a possible growth inhibitory property of its gene product, this gene is suggested to be a tumor suppressor gene.

**Synonyms:**

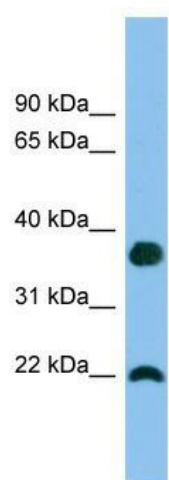
PS20

**Note:**

Immunogen Sequence Homology: Human: 100%; Dog: 86%; Pig: 85%; Rat: 79%

**Protein Families:**

Secreted Protein

**Product images:**

WB Suggested Anti-WFDC1 Antibody Titration:  
0.2-1 ug/ml; ELISA Titer: 1:1562500; Positive  
Control: A549 cell lysate