

## Product datasheet for **TA344730**

### MASA (ENOPH1) Rabbit Polyclonal Antibody

#### Product data:

Product Type:	Primary Antibodies
Applications:	WB
Recommended Dilution:	WB
Reactivity:	Human
Host:	Rabbit
Isotype:	IgG
Clonality:	Polyclonal
Immunogen:	The immunogen for anti-ENOPH1 antibody: synthetic peptide directed towards the N terminal of human ENOPH1. Synthetic peptide located within the following region: IEENVKEYLQTHWEEEECQQDVSLLRKQAEEDAHLDGAVPIPAASGNGVD
Formulation:	Liquid. Purified antibody supplied in 1x PBS buffer with 0.09% (w/v) sodium azide and 2% sucrose. <i>Note that this product is shipped as lyophilized powder to China customers.</i>
Purification:	Affinity Purified
Conjugation:	Unconjugated
Storage:	Store at -20°C as received.
Stability:	Stable for 12 months from date of receipt.
Predicted Protein Size:	29 kDa
Gene Name:	enolase-phosphatase 1
Database Link:	<a href="#">NP_067027</a> <a href="#">Entrez Gene 58478 Human</a> <a href="#">Q9UHY7</a>
Background:	ENOPH1 is a bifunctional enzyme that catalyzes the enolization of 2,3-diketo-5-methylthiopentyl-1-phosphate (DK-MTP-1-P) into the intermediate 2-hydroxy-3-keto-5-methylthiopentenyl-1-phosphate (HK-MTPenyl-1-P), which is then dephosphorylated to form the acireductone 1,2-dihydroxy-3-keto-5-methylthiopentene (DHK-MTPene).
Synonyms:	E1; MASA; MST145; mtnC

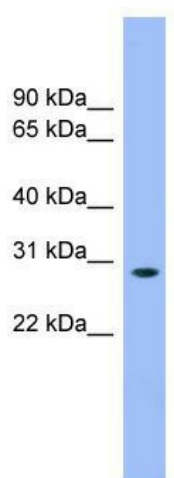


[View online »](#)

**Note:** Immunogen Sequence Homology: Pig: 100%; Rat: 100%; Human: 100%; Mouse: 100%; Guinea pig: 100%; Dog: 93%; Bovine: 93%; Rabbit: 93%; Horse: 79%

**Protein Pathways:** Cysteine and methionine metabolism

**Product images:**



WB Suggested Anti-ENOPH1 Antibody Titration:  
0.2-1 ug/ml; ELISA Titer: 1:1562500; Positive  
Control: Human Liver