

## Product datasheet for **TA344727**

### **C20orf77 (RPRD1B) Rabbit Polyclonal Antibody**

#### **Product data:**

<b>Product Type:</b>	Primary Antibodies
<b>Applications:</b>	WB
<b>Recommended Dilution:</b>	WB
<b>Reactivity:</b>	Mouse
<b>Host:</b>	Rabbit
<b>Isotype:</b>	IgG
<b>Clonality:</b>	Polyclonal
<b>Immunogen:</b>	The immunogen for Anti-Rprd1b antibody is: synthetic peptide directed towards the C-terminal region of Mouse Rprd1b. Synthetic peptide located within the following region: QERSVYGGEFIQQLKLSMEDSKSPPPKAAEEKSLKRTFQQIQEEEDDDY
<b>Formulation:</b>	Liquid. Purified antibody supplied in 1x PBS buffer with 0.09% (w/v) sodium azide and 2% sucrose. <i>Note that this product is shipped as lyophilized powder to China customers.</i>
<b>Purification:</b>	Affinity Purified
<b>Conjugation:</b>	Unconjugated
<b>Storage:</b>	Store at -20°C as received.
<b>Stability:</b>	Stable for 12 months from date of receipt.
<b>Predicted Protein Size:</b>	24 kDa
<b>Gene Name:</b>	regulation of nuclear pre-mRNA domain containing 1B
<b>Database Link:</b>	<a href="#">NP_067038</a> <a href="#">Entrez Gene 70470 Mouse</a> <a href="#">Q9NQG5</a>



[View online »](#)

**Background:**

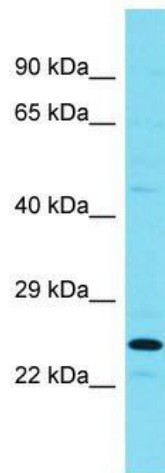
Rprd1b interacts with phosphorylated C-terminal heptapeptide repeat domain (CTD) of the largest RNA polymerase II subunit POLR2A, and participates in dephosphorylation of the CTD. It is a transcriptional regulator which enhances expression of CCND1. It promotes binding of RNA polymerase II to the CCND1 promoter and to the termination region before the poly-A site but decreases its binding after the poly-A site. It prevents RNA polymerase II from reading through the 3' end termination site and may allow it to be recruited back to the promoter through promotion of the formation of a chromatin loop. It also enhances the transcription of a number of other cell cycle-related genes including CDK2, CDK4, CDK6 and cyclin-E but not CDKN1A, CDKN1B or cyclin-A. Rprd1b promotes cell proliferation.

**Synonyms:**

C20orf77; CREPT; dj1057B20.2; NET60

**Note:**

Immunogen Sequence Homology: Dog: 100%; Pig: 100%; Rat: 100%; Horse: 100%; Human: 100%; Mouse: 100%; Bovine: 100%; Rabbit: 100%; Guinea pig: 100%

**Product images:**

Host: Rabbit; Target Name: Rprd1b; Sample Tissue: Mouse Testis lysates; Antibody Dilution: 1.0 ug/ml