

Product datasheet for **TA344725**

PRUNE (PRUNE1) Rabbit Polyclonal Antibody

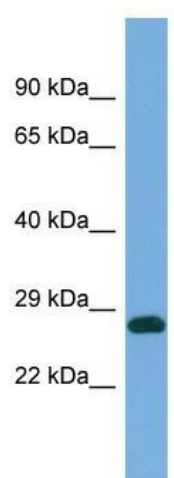
Product data:

Product Type:	Primary Antibodies
Applications:	WB
Recommended Dilution:	WB
Reactivity:	Human
Host:	Rabbit
Isotype:	IgG
Clonality:	Polyclonal
Immunogen:	The immunogen for Anti-PRUNE antibody is: synthetic peptide directed towards the C-terminal region of Human PRUNE. Synthetic peptide located within the following region: NSLISGLSQDEEDPPLPPTPMNSLVDECPLDQGLPKLSAEAVFEKCSQIS
Formulation:	Liquid. Purified antibody supplied in 1x PBS buffer with 0.09% (w/v) sodium azide and 2% sucrose. <i>Note that this product is shipped as lyophilized powder to China customers.</i>
Purification:	Affinity Purified
Conjugation:	Unconjugated
Storage:	Store at -20°C as received.
Stability:	Stable for 12 months from date of receipt.
Predicted Protein Size:	26 kDa
Gene Name:	prune exopolyphosphatase
Database Link:	NP_067045 Entrez Gene 58497 Human Q86TP1
Background:	The function of this protein remains unknown.
Synonyms:	DRES-17; DRES17; HTCD37
Note:	Immunogen Sequence Homology: Human: 100%; Mouse: 100%; Rabbit: 100%; Dog: 93%; Pig: 93%; Rat: 93%; Horse: 93%; Bovine: 93%; Guinea pig: 93%
Protein Pathways:	Purine metabolism



[View online »](#)

Product images:



Host: Rabbit; Target Name: PRUNE; Sample
Tissue: COLO205 Whole Cell lysates; Antibody
Dilution: 1.0 ug/ml